

INDEX

INDEX

print 普麗®
high pressure laminates

www.abetlaminati.com

GREATER CHINA
COLLECTION



▪ Made in Italy ▪

ABET LAMINATI

Unlimited selection

GREATER CHINA COLLECTION Index ..6

CODE	NAME	FINISH	PAGE
1612	Teak Sumatra	Sei	56
1619	Rovere Trasversale	Sei	53
1619Y	Rovere Trasversale	Cross	48
1621	Teak Maldive	Sei	55
1637	Pero Marine	Sei	55
1678	Acero Ivory	Sei	54
1804	Blu Tenebre	Sei	70
1804F	Blu Tenebre	Grana	64
1804G	Blu Tenebre	Lucida	61
1804M	Blu Tenebre	Microline	64
1810	Grigio Autunno	Sei	68
1810G	Grigio Autunno	Lucida	59
1812G	Giallo Polenta	Lucida	61
1813	Magnolia	Sei	67
1816	Sahara Beige	Sei	68
1816W	Sahara Beige	Grainwood	63
1819	Grigio Monviso	Sei	67
1820	Grigio Cosmico	Sei	68
1820DH	Grigio Cosmico	Dharma	40
1820W	Grigio Cosmico	Grainwood	63
1832Y	Grigio Tempesta	Cross	59
1834	Circ é	Sei	69
1850G	Lime	Lucida	61
1860	Samoa	Sei	70
1861	Blu Notte	Sei	69
1906	Pike Sal	Grainwood	44
1907	Pike Pimenta	Grainwood	44
1908	Pike Miel	Grainwood	43
1909	Pike Nuez	Grainwood	44
1910	Pike Caf é	Grainwood	44
1920	Saturno	Satin	34
1921	Venere	Satin	34
1927P	Mercurio	Papier	33
1927S	Mercurio	Satin	33
1928P	Urano	Papier	33
1928S	Urano	Satin	33
1929	Sahel	Papier	34
1930	Marte	Climb	34
1931	Cobi	Papier	34
1941	Cadaques	Sei	69
1942	Tuareg	Sei	69
1944	Squalo	Sei	69
1945	Gange	Sei	68
1946	Orage	Sei	68
1947	Agave	Sei	69
1948HT	Aurora Argentina	Holz	47
1949HT	Aurora Islanda	Holz	47
1950AQ	Boucl é Prussia	Aquarma	42
1952T	Montale Apricale	Root	50
1954T	Montale Verezzi	Root	50
1955AQ	Montale Noli	Aquarma	42
1957AQ	Fenice Aker	Aquarma	42
1959AQ	Fenice Amon	Aquarma	42
1960AQ	Fenice Iside	Aquarma	42
1961HT	Aurora Norvegia	Holz	47
1962T	Aurora Svezia	Root	50
1966AQ	Boucl é Persia	Aquarma	42
1967	Corallo Malindi	Climb	41
1968	Betulla Nordica	Papier	46
2702	Agadir Silver	Drops	26
2704	Casablanca Silver	Drops	27

GREATER CHINA COLLECTION Index ..7

CODE	NAME	FINISH	PAGE
2705	Marrakech Silver	Drops	25
2706	Agadir Gold	Drops	26
2707	Casablanca Gold	Drops	27
2708	Marrakech Gold	Drops	25
2709	Agadir Steel	Drops	26
2710	Casablanca Steel	Drops	27
2711	Marrakech Steel	Drops	25
2810	Cemento	Climb	36
2811	Mongolia	Climb	34
2820	Fiore Pop	Lucida	05
2821	Neige	Lucida	05
2822	Neige	Lucida	05
2823	Neige	Lucida	06
2824	Fiore Pop	Lucida	06
2825	Ivy	Lucida	06
2826	Fiore Pop	Lucida	06
2827	Ivy	Lucida	06
2828	Broccato	Lucida	06
2829	Broccato	Lucida	06
2830	Broccato	Lucida	06
2831	Broccato	Lucida	06
2832	Ivy	Lucida	06
2833	Neige	Lucida	05
2834	Ivy	Lucida	06
2835	Neige	Lucida	05
2901	Sable Pol	Polaris	21
2902	Noir Pol	Polaris	20
2903	Gris Perle Pol	Polaris	20
2904	Blanc Glace Pol	Polaris	21
2905	Gris Cosmique Pol	Polaris	21
2906	Gris Moyen Pol	Polaris	21
2907	Gris Fonc é Pol	Polaris	20
2908	Sahara Pol	Polaris	21
2909	Gris Graphite Pol	Polaris	20
2910	Gris Clair Pol	Polaris	21
5377	Misura B-W	Sei	03
5722	Artichoke Green	Lucida	11
5723	Artichoke Violet	Lucida	11
5724	Artichoke Grey/Green	Lucida	11
5725	Fishbone Grey	Lucida	13
5726	Fishbone Blue	Lucida	13
5727	Fishbone Yellow	Lucida	13
5728	Knock-Out White	Lucida	15
5729	Knock-Out Black	Lucida	15
5730	Knock-Out Blue	Lucida	15
5731	Paesemio B/W	Lucida	12
5732	Paesemio Night	Lucida	12
5733	Paesemio Day	Lucida	12
5734	Rockets Green	Lucida	12
5735	Rockets Yellow	Lucida	12
5736	Rockets Red	Lucida	12
5737	Tartan Grey	Lucida	12
5738	Tartan Pink	Lucida	12
5739	Tartan Yellow	Lucida	12
5740	Betulla B/W	Lucida	15
5741	Betulla Green	Lucida	15
5742	Betulla Purple	Lucida	15
5743	Canvas Blue	Lucida	14
5744	Canvas Orange	Lucida	14
5745	Canvas Green	Lucida	14
5746	Derby Green	Lucida	14

GREATER CHINA COLLECTION Index ..8

CODE	NAME	FINISH	PAGE
5747	Derby Red	Lucida	14
5748	Derby Yellow	Lucida	14
5749	Furrows Black/Colors	Lucida	14
5750	Furrows Colors	Lucida	14
5751	Furrows B/W	Lucida	14
5752	Massaua Blue/Orange	Lucida	14
5753	Massaua Red/Blue	Lucida	14
5754	Massaua Brown/Yellow	Lucida	14
5755	Yayoi Red/Blue	Lucida	12
5756	Yayoi Blue/Green	Lucida	12
5757	Yayoi Green/Pink	Lucida	12
5798	Snow Haze	Lucida	08
5799	Snow Powder	Lucida	08
5800	Snow Blizzard	Lucida	08
5801	Leaf Maple	Lucida	07
5802	Leaf Birch	Lucida	07
5803	Leaf Palm	Lucida	07
5804	Icicles Amethyst	Lucida	08
5805	Icicles Frost	Lucida	08
5806	Icicles Quartz	Lucida	08
5807	Rain Monsoon	Lucida	09
5808	Rain Drizzle	Lucida	09
5809	Rain Storm	Lucida	09
5810	Klounds Cirrus	Lucida	08
5811	Klounds Sunset	Lucida	08
5812	Klounds Nimbus	Lucida	08
5813	Waterfall Niagara	Lucida	09
5814	Waterfall Kascade	Lucida	09
5815	Waterfall Plunge	Lucida	09
5816	Krystal Ice	Lucida	08
5817	Krystal Silver	Lucida	08
5818	Krystal Black	Lucida	08
5819	Shell Konch	Lucida	09
5820	Shell Triton	Lucida	09
5821	Shell Spirula	Lucida	09
5822	Glacier Alpine	Lucida	09
5823	Glacier Fjord	Lucida	09
5824	Glacier Thermal	Lucida	09
5825	Cities Kosmo	Lucida	07
5826	Cities Muni	Lucida	07
5827	Cities Urban	Lucida	07
6111	Kiev	Lucida	17
6112	Boston	Lucida	17
6113	Kitami	Lucida	17
6114	Visby	Lucida	18
6115	Praga	Lucida	18
6116	San Paolo	Lucida	17
6117	Dakar	Lucida	18
6118	Liverpool	Lucida	18
6119	New Orleans	Lucida	18
6120	Torino	Lucida	17

ABET LAMINATI

Unlimited selection

INDEX

GREATER CHINA
COLLECTION

▪ Made in Italy ▪



<https://cn.abetlaminati.com>

GREATER CHINA COLLECTION			Index ..1
CODE	NAME	FINISH	PAGE
243	Vertical Line	Sei	32
256E	Vertical Line	Millerighle	32
312	Weng è Zambia	Sei	55
313	Weng è Congo	Sei	55
321	Teak Asia	Sei	54
358	Noce Crea	Sei	56
358T	Noce Crea	Root	50
370	Olmo Fine	Sei	55
381	Douglas Vanilla	Sei	53
381M	Douglas Vanilla	Microline	52
381W	Douglas Vanilla	Grainwood	51
383	383	Sei	54
385	Acerò Ottawa	Sei	54
387	Douglas	Sei	53
387M	Douglas	Microline	52
388	Douglas Ice	Sei	53
388M	Douglas Ice	Microline	52
391	Douglas Cocoa	Sei	55
391M	Douglas Cocoa	Microline	52
392M	Douglas Tabacco	Microline	52
405	Bianco Porcellana	Sei	67
405G	Bianco Porcellana	Lucida	61
405Y	Bianco Porcellana	Cross	59
406	Bianco Primavera	Sei	67
406C	Bianco Primavera	Lucida	23
406G	Bianco Primavera	Lucida	61
406N	Bianco Primavera	Satin	60
406W	Bianco Primavera	Grainwood	63
406Y	Bianco Primavera	Cross	59
409	Latte	Sei	67
410	Bianco Ghiaccio	Sei	67
410AQ	Bianco Ghiaccio	Aquarma	42
410E	Bianco Ghiaccio	Millgurle	62
410F	Bianco Ghiaccio	Grana	60
410G	Bianco Ghiaccio	Lucida	61
410M	Bianco Ghiaccio	Microline	64
410N	Bianco Ghiaccio	Satin	60
410W	Bianco Ghiaccio	Grainwood	63
411	Bianco	Sei	67
411A	Bianco	Full-colour	60
411E	Bianco	Millgurle	62
411F	Bianco	Grana	60
411G	Bianco	Lucida	61
411M	Bianco	Microline	64
411N	Bianco	Satin	60
412	Avorio	Sei	68
413	Beige Ardenne	Sei	68
413G	Beige Ardenne	Lucida	59
414	Sabbia	Sei	68
414A	Sabbia	Full-colour	60
416	Beige	Sei	68
416E	Beige	Millgurle	59
418	Panna Crema	Sei	67
418F	Panna Crema	Grana	60
420M	Beige Pastello	Microline	64
421	Nero	Sei	67
421A	Nero	Full-colour	60
421AQ	Nero	Aquarma	42
421C	Nero	Soft	23
421G	Nero	Lucida	59
421N	Nero	Satin	60

GREATER CHINA COLLECTION			Index ..2
CODE	NAME	FINISH	PAGE
421Ostuni	Nero	Ostuni	19
421W	Nero	Grainwood	59
421Y	Nero	Cross	59
423	Viola Madras	Sei	70
424	Viola Tramonto	Sei	66
425	Lilla Erica	Sei	66
425M	Lilla Erica	Microline	64
427	Porpora	Sei	66
428	Blu Elettrico	Sei	70
428E	Blu Elettrico	Millgurle	62
430	Lilla Gemini	Sei	70
430E	Lilla Gemini	Millgurle	62
431	Rosso	Sei	66
431E	Rosso	Millgurle	62
431G	Rosso	Lucida	61
431W	Rosso	Grainwood	63
432	Terra Odra	Sei	66
435	Rosso Antico	Sei	66
435G	Rosso Antico	Lucida	61
435W	Rosso Antico	Grainwood	63
437	Blu Giungla	Sei	69
440	Verde Biliardo	Sei	69
441	Verde Cedro	Sei	69
441E	Verde Cedro	Millgurle	62
441M	Verde Cedro	Microline	64
445	Verde Chiaro	Sei	69
446	Verde Pastello	Sei	69
450C	Verde Lauro	Soft	23
451	Sempreverde	Sei	69
454	Verde Caraibi	Sei	69
460	Verde Erbetta	Sei	69
460E	Verde Erbetta	Millgurle	62
460G	Verde Erbetta	Lucida	61
463	Giallo Pom-Pom	Sei	66
463E	Giallo Pom-Pom	Millgurle	62
468	Giallo Canarie	Sei	66
468E	Giallo Canarie	Millgurle	62
472	Grigio Londra	Sei	67
475	Grigio Perla	Sei	67
475A	Grigio Perla	Full-colour	60
477	Grigio	Sei	67
477M	Grigio	Microline	64
478	Grigio Chiaro	Sei	67
478DH	Grigio Chiaro	Dharma	40
478E	Grigio Chiaro	Millgurle	59
478N	Grigio Chiaro	Satin	60
478W	Grigio Chiaro	Grainwood	63
479	Grigio Tortora	Sei	68
480	Grigio Plomo	Sei	68
482	Bleu Panarea	Sei	70
484	Blu Zaffiro	Sei	70
484E	Blu Zaffiro	Millgurle	62
484G	Blu Zaffiro	Lucida	61
486	Azzurro Lago	Sei	69
487	Azzurro Polvere	Sei	70
494	Bouganville	Sei	66
496F	Bleu Esperia	Grana	64
498	Viola Giglio	Sei	66
499	Bleu California	Sei	70
545	Vulcano	Climb	38
546	Tivoli	Climb	38

GREATER CHINA COLLECTION			Index ..3
CODE	NAME	FINISH	PAGE
547	Tivoli Greige	Climb	38
559	Petra	Climb	38
601	Rovere Impero	Sei	56
601HT	Rovere Impero	Holz	47
602	Rovere Boemia	Sei	53
602HT	Rovere Boemia	Holz	47
602T	Rovere Boemia	Root	49
603	Cedro Del Libano	Sei	57
604	Colony	Sei	57
605T	Colony Brown	Root	50
606	Artic Pine	Sei	57
607	Morgan Ash	Sei	57
607P	Morgan Ash	Papier	46
608W	Grey Ash	Grainwood	51
619	Grey Maple	Sei	54
620	Maple	Sei	54
620P	Maple	Papier	46
626W	Noce Mondol è	Grainwood	51
631W	Teak Pliss è	Grainwood	51
633W	Limba Gold	Grainwood	51
634W	Limba Noir	Grainwood	51
639	Olmo Montano	Sei	54
640)	Larice)	Sei	56
648	Santos Scuro	Sei	55
649	Santos Chiaro	Sei	57
649W	Santos Chiaro	Grainwood	51
650	Rovere Texas	Sei	54
650P	Rovere Texas	Papier	46
656	Rovere Tennessee	Sei	56
657	Rovere America	Sei	56
657HT	Rovere America	Holz	47
658	Oak Nature	Sei	56
659	Pino Svizzera	Sei	54
659M	Pino Svizzera	Microline	52
660	Pino Savoia	Sei	54
660M	Pino Savoia	Microline	52
661	Pino Chambery	Sei	54
661M	Pino Chambery	Microline	52
662	Teak Daniela	Sei	55
662T	Teak Daniela	Root	50
664W	Marbella	Grainwood	51
669T	Rovere Primitivo	Root	50
670T	Rovere Artico	Root	50
673T	Quercia Miele	Root	50
674P	Eucalipto	Papier	46
677T	Old Wood	Root	50
726G	Metalli	Lucida	28
727	Metalli	Satin	29
730	Metalli	Lucida	30
740	Metalli	Lucida	30
810	Mini Bianco	Sei	67
810E	Mini Bianco	Millgurle	62
810F	Mini Bianco	Grana	60
810G	Mini Bianco	Lucida	61
810M	Mini Bianco	Microline	64
810W	Mini Bianco	Grainwood	63
813	Beige Manhattan	Sei	68
813W	Beige Manhattan	Grainwood	63
823G	Rosso Tango	Lucida	61
828	Rosa Baby	Sei	66
828E	Rosa Baby	Millgurle	62

GREATER CHINA COLLECTION			Index ..4
CODE	NAME	FINISH	PAGE
828G	Rosa Baby	Lucida	61
828M	Rosa Baby	Microline	64
830	Rosa Crazy Horse	Sei	66
831	Rosso Mattone	Sei	66
831M	Rosso Mattone	Microline	64
831W	Rosso Mattone	Grainwood	63
834	Rosso Woom	Sei	66
834E	Rosso Woom	Millgurle	62
836	Rosso Prugna	Sei	66
836W	Rosso Prugna	Grainwood	63
837	Sarmiento	Sei	68
837F	Sarmiento	Grana	60
838	Rosso Primario	Sei	70
842	Verde Sub	Sei	69
842W	Verde Sub	Grainwood	63
845	Verde Versailles	Sei	69
846	Turchese	Sei	69
846E	Turchese	Millgurle	62
846G	Turchese	Lucida	61
847	Azzurro	Sei	70
849	Blu Pavone	Sei	70
849G	Blu Pavone	Lucida	61
851	Blu Cobalto	Sei	70
852	Big Bleu	Sei	70
854	Silver Bleu	Sei	67
854G	Silver Bleu	Lucida	61
854M	Silver Bleu	Microline	64
856	Blu Acciaio	Sei	70
857	Celeste Myosotis	Sei	70
858	Azzurro Pervinca	Sei	70
858F	Azzurro Pervinca	Grana	64
859	Blu Faenza	Sei	70
860	Giallo Piper	Sei	66
860E	Giallo Piper	Millgurle	62
861	Giallo Pop	Sei	66
868M	Grigio Medio	Microline	64
869	Grigio Alpaca	Sei	68
869M	Grigio Alpaca	Microline	64
869W	Grigio Alpaca	Grainwood	63
870	Grigio Lastra	Sei	67
870E	Grigio Lastra	Millgurle	59
870W	Grigio Lastra	Grainwood	63
871	Grigio Scuro	Sei	67
871M	Grigio Scuro	Microline	64
873	Metalli	Satin	29
874	Metalli	Satin	29
877E	Metalli	Millgurle	31
877M	Metalli	Microline	30
878	Metalli	Mobida	30
879	Grigio Grafite	Sei	67
879C	Grigio Grafite	Soft	23
879DH	Grigio Grafite	Dharma	40
879E	Grigio Grafite	Millgurle	59
879G	Grigio Grafite	Lucida	59
879N	Grigio Grafite	Satin	60
879Ostuni	Grigio Grafite	Ostuni	19
879W	Grigio Grafite	Grainwood	59
879Y	Grigio Grafite	Grainwood	59
880E	Metalli	Millgurle	31
880G	Metalli	Lucida	29
881G	Metalli	Lucida	29

GREATER CHINA COLLECTION			Index ..5
CODE	NAME	FINISH	PAGE
891	Scotch Brown	Sei	66
891W	Scotch Brown	Grainwood	63
892	West Brown	Sei	68
892W	West Brown	Grainwood	63
893	Terra D' Ombra	Sei	68
893F	Terra D' Ombra	893F	60
893M	Terra D' Ombra	893M	64
893W	Terra D' Ombra	Grainwood	63
894	Viola Fumo	Sei	68
897W	Bruno Vulcano	Grainwood	63
898	Bruno Fiandra	Sei	68
1210	Bacterio B-W	Sei	03
1230	DIGITAL CIRCUS	Sei	04
1231	DIGITAL CIRCUS	Sei	04
1232	DIGITAL CIRCUS	Sei	04
1233	DIGITAL CIRCUS	Sei	04
1239	DIGITAL CIRCUS	Sei	04
1240	DIGITAL CIRCUS	Sei	04
1241	DIGITAL CIRCUS	Sei	04
1242	DIGITAL CIRCUS	Sei	04
1243	DIGITAL CIRCUS	Sei	04
1244	DIGITAL CIRCUS	Sei	04
1318	Zebrano Moro	Sei	56
1329	Noce Bossea	Sei	55
1354	Zebrano Gold	Sei	55
1355	Oak	Sei	56
1373	Mogano Virginia	Sei	55
1381	Transversal Oak	Sei	53
1381Y	Transversal Oak	Cross	48
1382	Transversal Tobacco	Sei	56
1382Y	Transversal Tobacco	Cross	48
1383	Thunder Oak	Sei	57
1384	Frassino Maggiore	Sei	54
1386	Saw Cut Ash	Sei	54
1386Y	Saw Cut Ash	Cross	48
1387	Smoked Wood	Sei	56
1388	Zebrano Grigio	Sei	57
1389	Noce Iseo	Sei	55
1391T	Olmo Grenoble	Root	49
1392T	Rovere Moka	Root	49
1394T	Olmo Perlato	Root	49
1395	Olmo Ambrato	Sei	53
1395T	Olmo Ambrato	Root	50
1396T	Olmo Biondo	Root	49
1430	America	Lucida	74
1431	Europa	Lucida	74
1432	Africa	Lucida	74
1433	Oceania	Lucida	72
1440	Kenya	Lucida	74
1441	Nairobi	Lucida	74
1442	Irlanda	Lucida	74
1443	Dublino	Lucida	74
1446	Texas	Lucida	74
1447	Dallas	Lucida	74
1453P	Piombo	Papier	37
1456	Royale	Papier	37
1458	Brooklyn	Papier	37
1459	Statuario	Papier	37
1609	Ciliegio Pavese	Sei	55
1609P	Ciliegio Pavese	Papier	46
1611	Ciliegio Fey	Sei	54

FAMOUS DESIGNERS

Giorgio Giugiaro -
Ettore Sottsass -
Alessandro Mendini -
Mario Bellini -
Enzo Mari -
Joe Colombo -
Francois Burkhardt -
Paola Navone -
Karim Rashid -
Konstantin Grcic -
Ugo Nespolo -
Giulio Iacchetti -

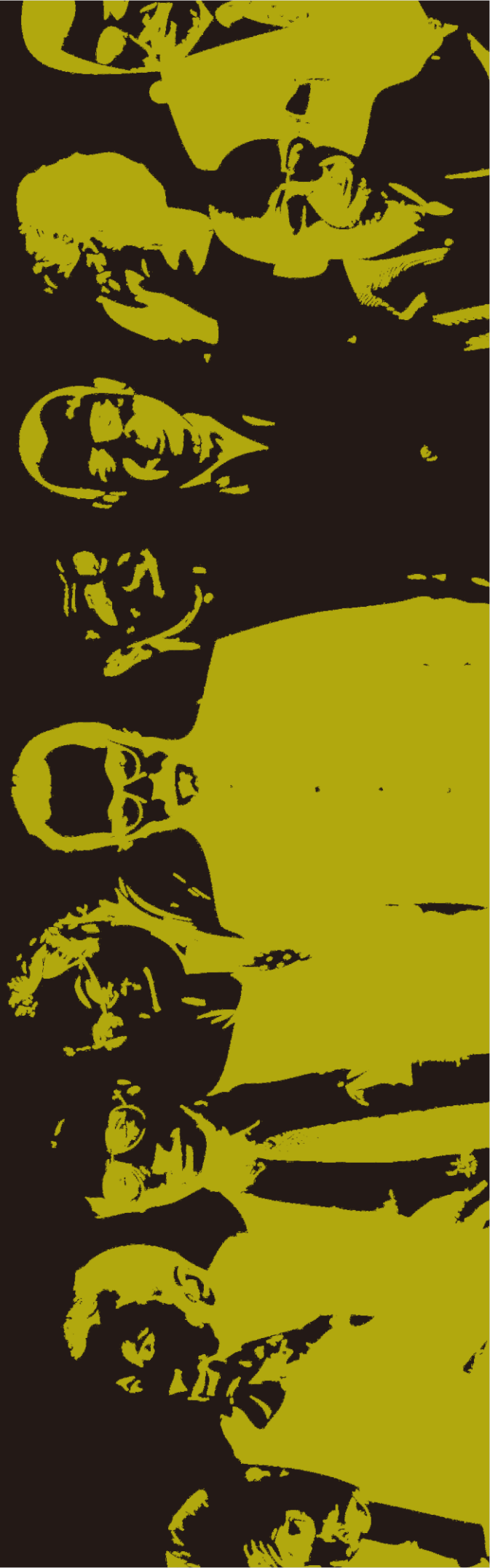
...

Ab Rogers, Achille Castiglioni, Adolfo Natalini, Alberto Biagetti, Aldo Cibic, Alessandro Mendini, Alessandro Pedretti, Alessandro Guerriero, Andrea Branzi, Antonio Citterio, Azumi, Barber & Osgerby, Bethan Laura Wood, Bibi & Gutjahr, Bruno Munari, Cahen & Grégori, Christian Biecher, Christoph Radl, Cini Boeri, Claudio Monti, Clino Trini Castelli, Cristiano Toraldo di Francia, Dario Miticocchio, De Pas D'Urbino Lomazzi, Denis Santachiara, Diego Grandi, Dorota Koziara, Dumoffice, El Ultimo Grito, Eoos Design, Ettore Sottsass, Fabio Novembre, Ferruccio Laviani, Francesco Mendini, Franco Purini, Gae Aulenti, Getulio Alviani, George J. Sowden, Gerard Taylor, Gianni Pareschi, Gio Ponti, Giorgio De Ferrari, Gregotti Associati, Harry & Camila, Isao Hosoe, Italo Rota, James Irvine, Jean Nouvel, JoeVelluto, Johanna Grawunder, Juliette Van Der Sanden, King & Miranda, Lorenzo Damiani, Luciano Grugni, Luigi Caccia Dominioni, Marc Sadler, Marcel Wanders, Marcello Morandini, Marco Piva, Marco Zanini, Marco Zanuso, Markus Benesch, Martine Bedin, Masanori Umeda, Massimo Iosa Ghini, Massimo Morozzi, Matteo Ragni, Matteo Thun, Mauro Olivieri, Michael Podgorschek, Michael Sodeau, Michele De Lucchi, Mike Ryan, N2 Design, Nathalie du Pasquier, Nathalie Jean, Odoardo Fioravanti, Paolo Nava, Paolo Portoghesi, Patricia Urquiola, Patrick Norguet, Peter Shire, Philippe Starck, Ricardo Bofill, Richard Hutten, Rodolfo Dordoni, Rudi Haberl, Salvati e Tresoldi, Sharon Elphick, Shigeru Uchida, Silvio De Ponte, Simon Pengelly, Sophia Wood, Stefania Di Petrillo, Theo Williams, Thomas Baumhauer, Vico Magistretti, Vittorio Simoni ...

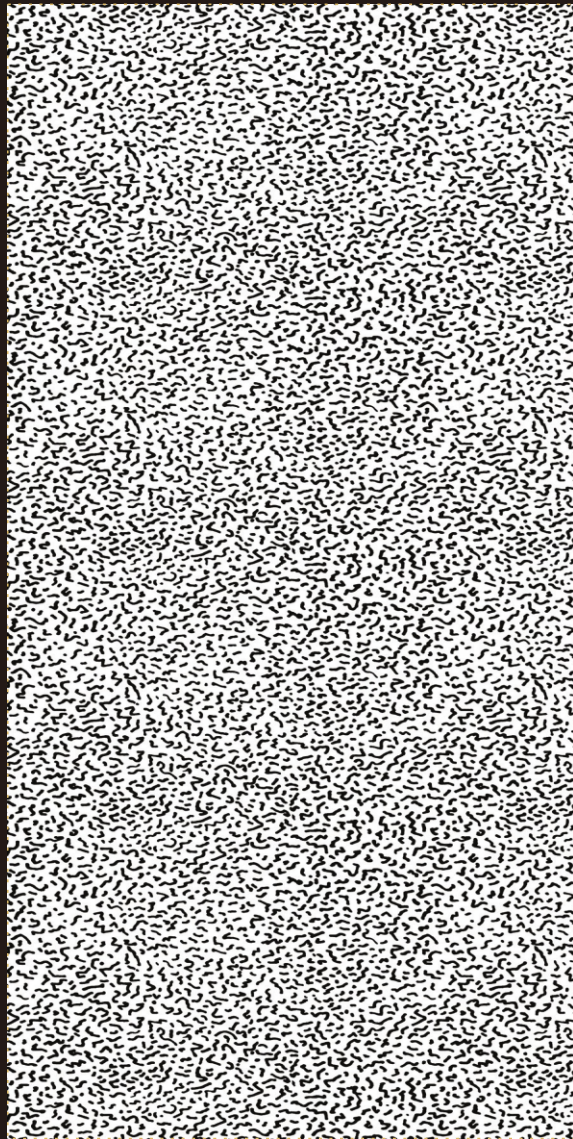


DIGITAL CIRCUS

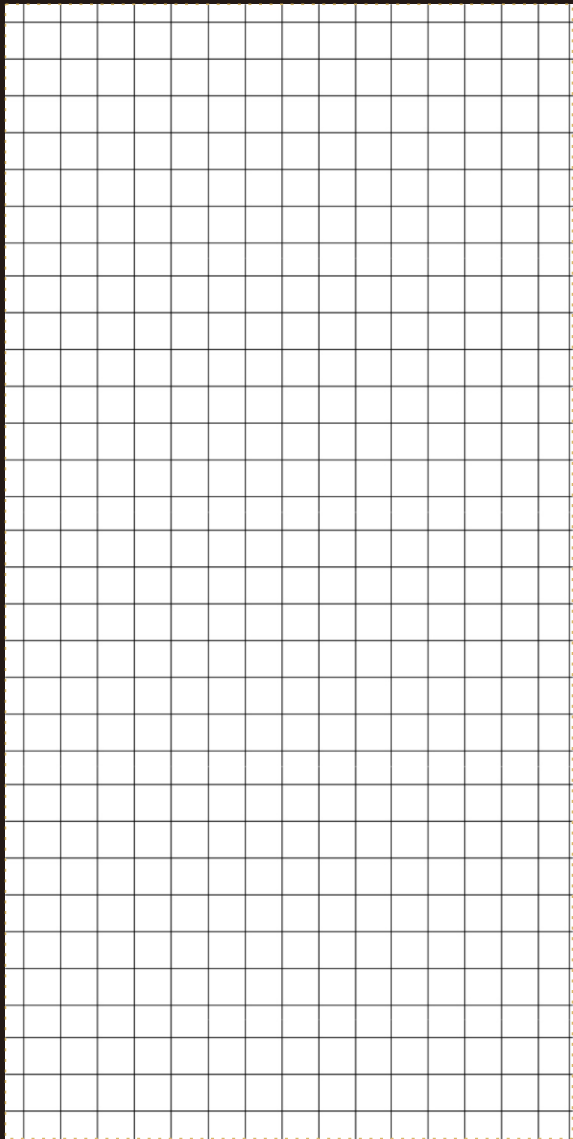
ALESSANDRO MENDINI
ETTORE SOTTASS, SUPERSTUDIO
PAOLA NAVONE



DIGITAL CIRCUS



1210 Bacterio B-W



5377 Misura B-W

DESIGNED BY ETTORE SOTTASS , SUPERSTUDIO

Finish : Sei
Size: 130x305cm



1240



1241



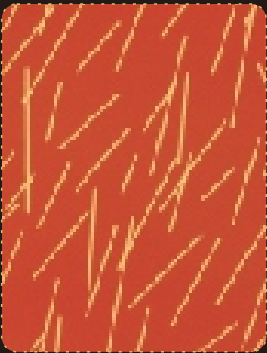
1232



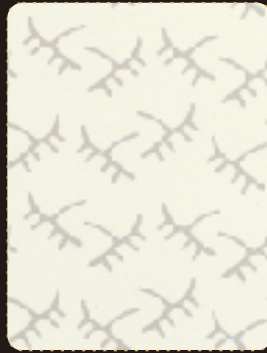
1231



1230



1243



1233



1244



1239



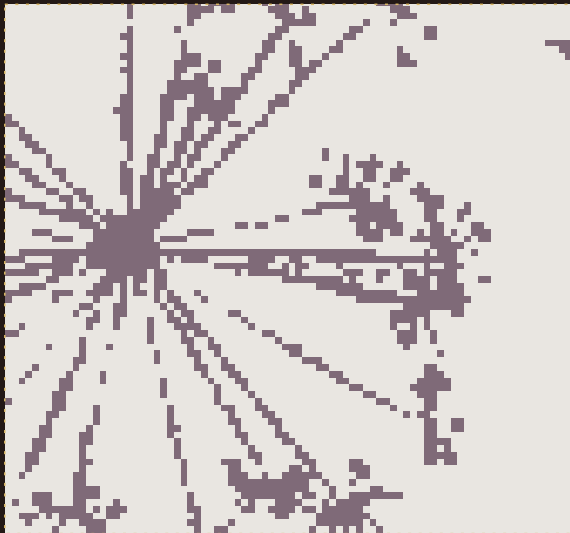
1242

DESIGNED BY ALESSANDRO MENDINI

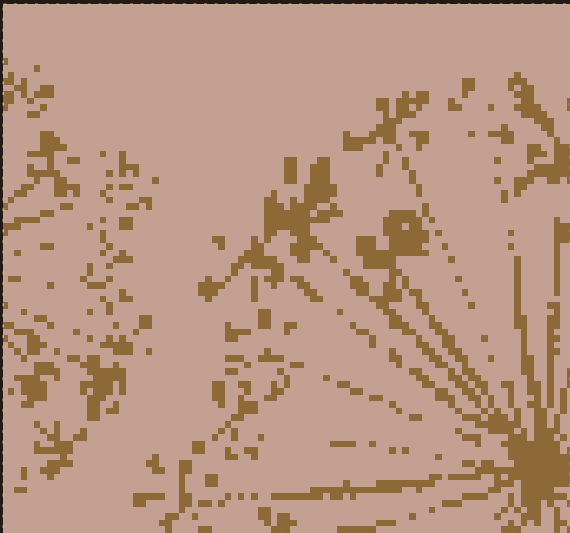
Finish : Sei
Size: 130x305cm



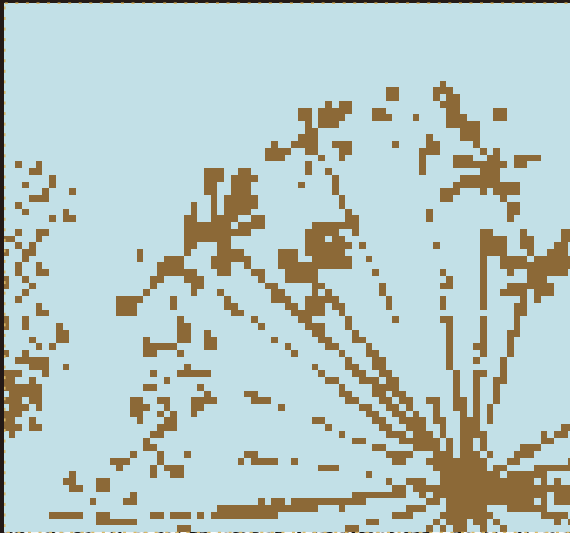
DIGITAL CIRCUS



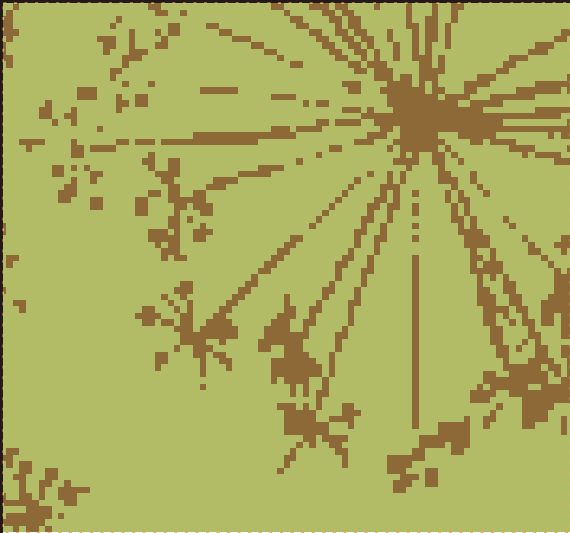
2835 Neige



2821 Neige



2833 Neige



2822 Neige

DESIGNED BY PAOLA NAVONE

Finish : Lucida
Size: 130x305cm



2831 Broccato



2829 Broccato



2828 Broccato



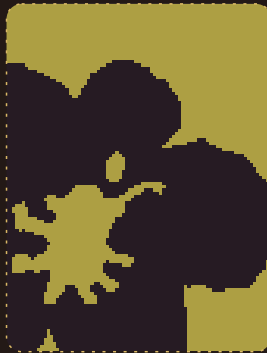
2830 Broccato



2820 Fiore Pop



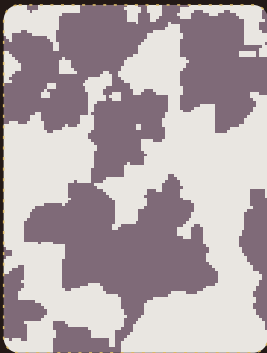
2823 Fiore Pop



2826 Fiore Pop



2824 Fiore Pop



2827 Ivy



2825 Ivy



2834 Ivy



2832 Ivy

DESIGNED BY PAOLA NAVONE

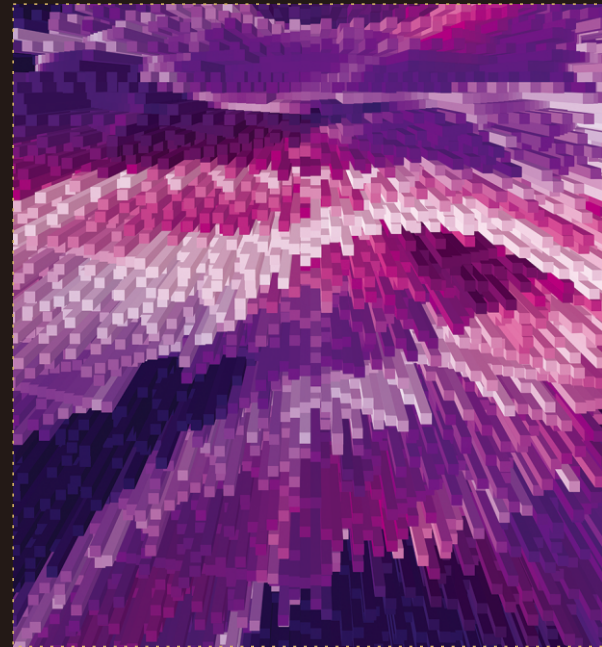
Finish : Lucida
Size: 130x305cm



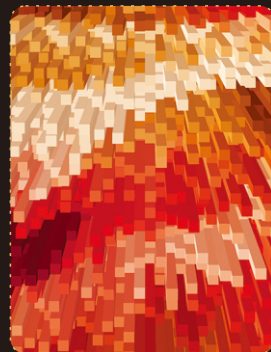


DIGITAL NATURE

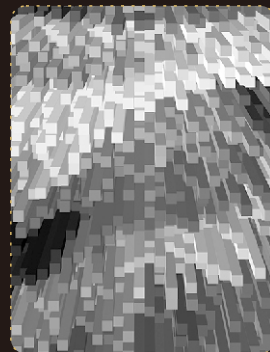
KARIM RASHID



5826 Cities Muni



5825 Cities Kosmo



5827 Cities Urban



5801 Leaf Maple



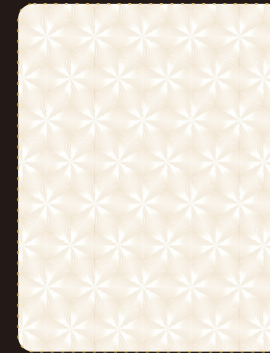
5802 Leaf Birch



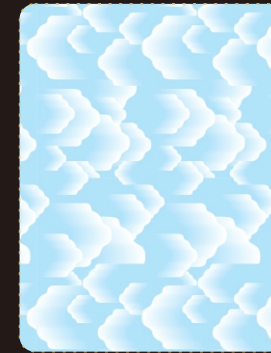
5803 Leaf Palm



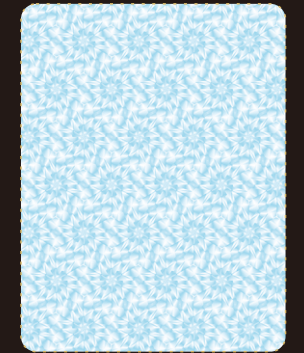
5804 Icicles Amethyst



5798 Snow Haze



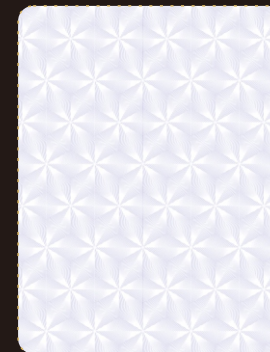
5810 Klouds Cirrus



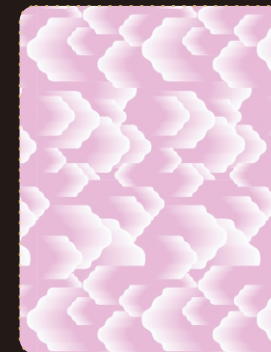
5816 Krystal Ice



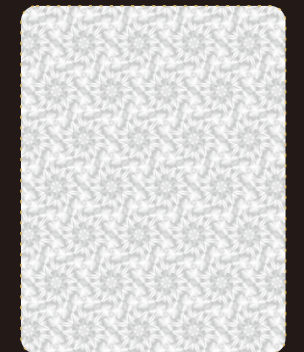
5805 Icicles Frost



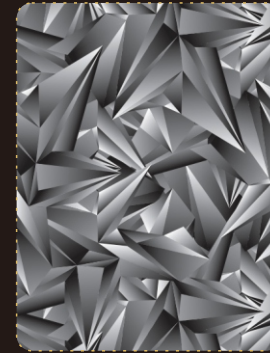
5799 Snow Powder



5811 Klouds Sunset



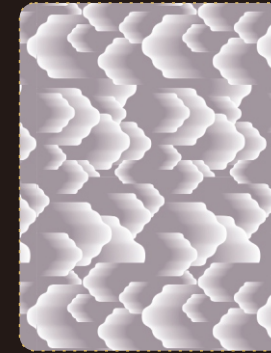
5817 Krystal Silver



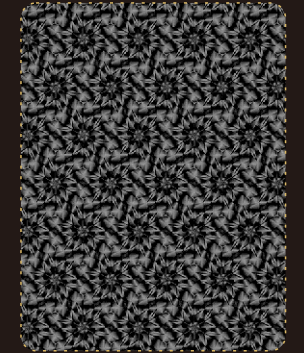
5806 Icicles Kwartz



5800 Snow Blizzard



5812 Klouds Nimbus



5818 Krystal Black

DESIGNED BY KARIM RASHID

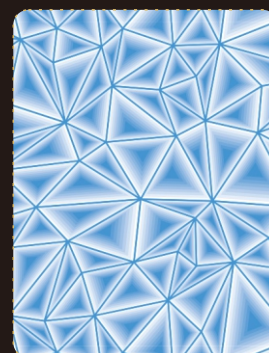
Finish : Lucida
Size: 130x305cm

DESIGNED BY KARIM RASHID

Finish : Lucida
Size: 130x305cm



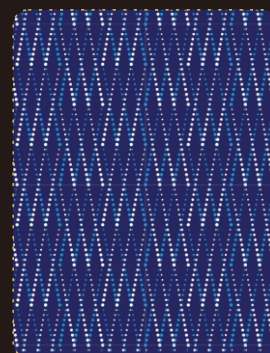
DIGITAL NATURE



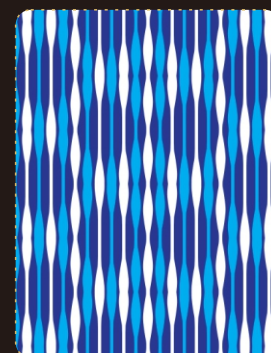
5822 Glacier Alpine



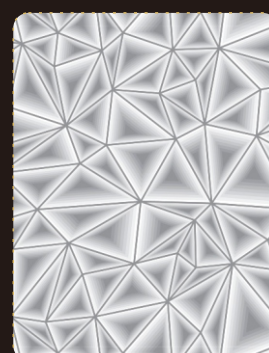
5819 Shell Konch



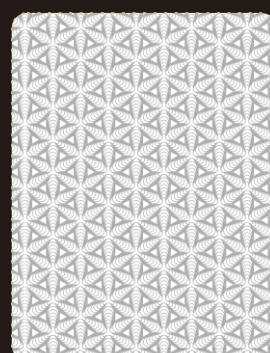
5807 Rain Monsoon



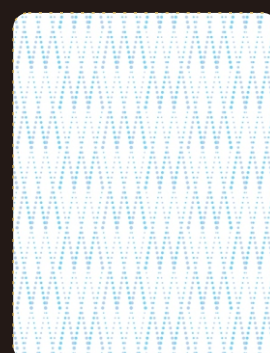
5813 Waterfall Niagara



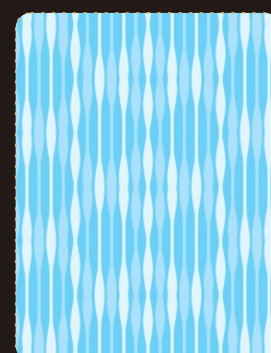
5823 Glacier Fjord



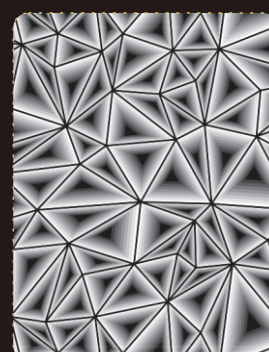
5820 Shell Triton



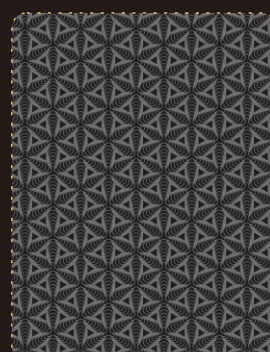
5808 Rain Drizzle



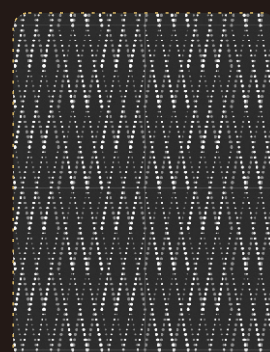
5814 Waterfall Kascade



5824 Glacier Thermal



5821 Shell Spirula



5809 Rain Storm



5815 Waterfall Plunge



PARADE COLLECTION

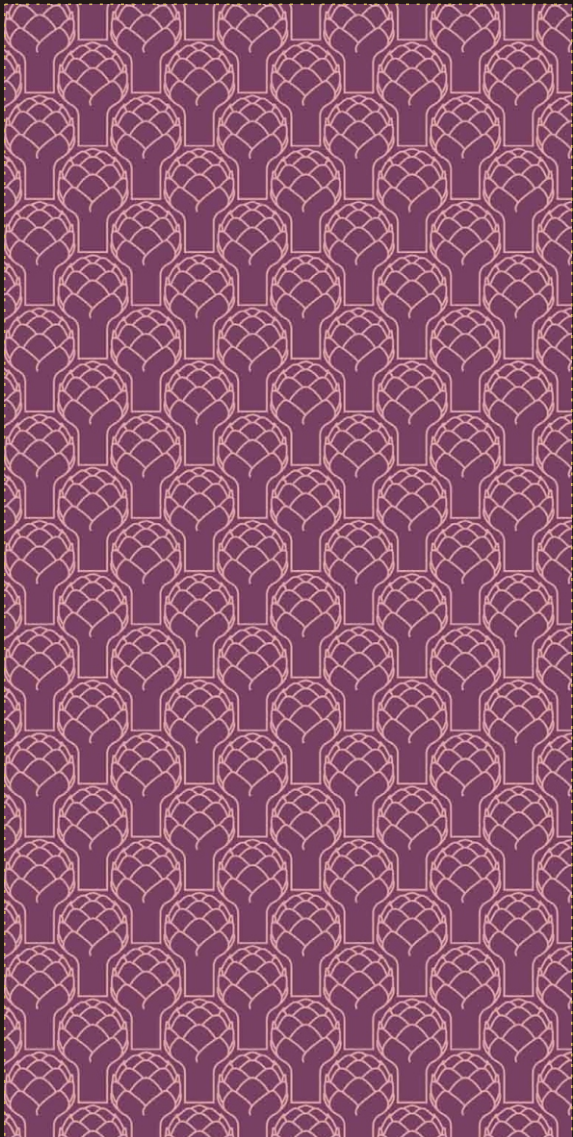
GIULIO IACCHETTI

DESIGNED BY KARIM RASHID

Finish : Lucida
Size: 130x305cm



PARADE COLLECTION



5723 Artichoke Violet



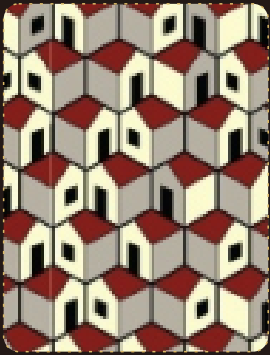
5722 Artichoke Green



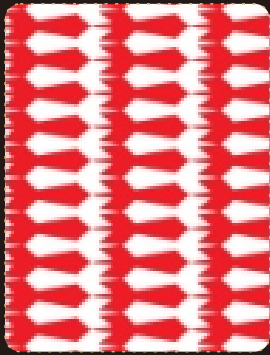
5724 Artichoke Grey/Green

DESIGNED BY GIULIO IACCHETTI

Finish : Lucida
Size: 130x305cm



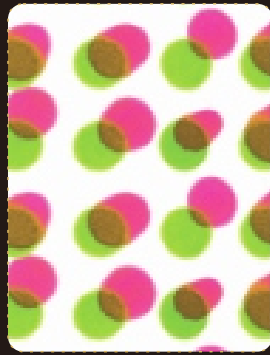
5733 Paesemio Day



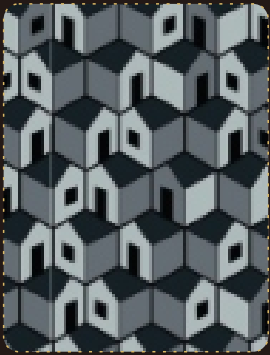
5736 Rockets Red



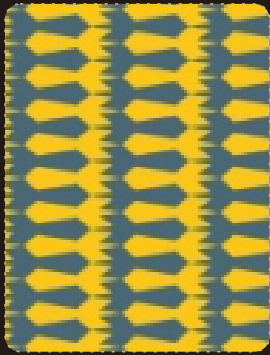
5739 Tartan Yellow



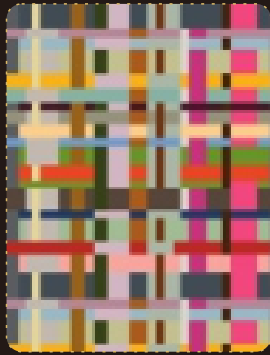
5757 Yayoi Green/Pink



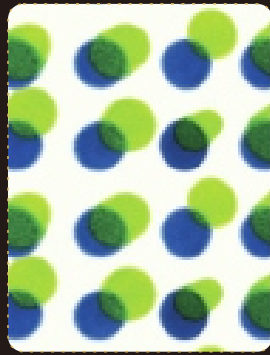
5732 Paesemio Night



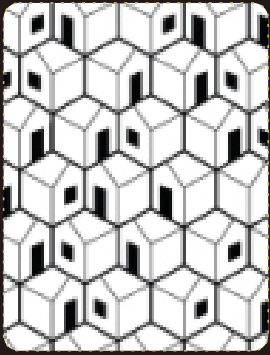
5735 Rockets Yellow



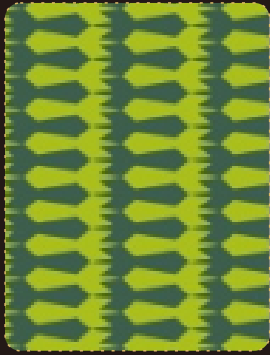
5738 Tartan Pink



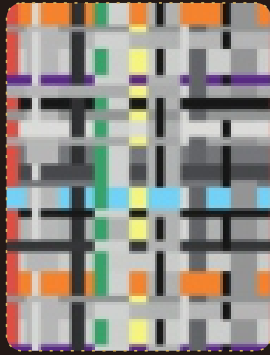
5756 Yayoi Blue/Green



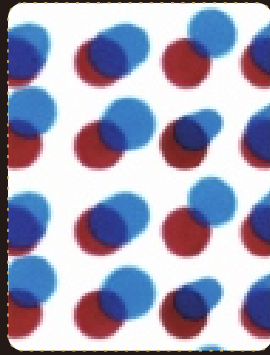
5731 Paesemio B/W



5734 Rockets Green



5737 Tartan Grey



5755 Yayoi Red/Blue

DESIGNED BY GIULIO IACCHETTI

Finish : Lucida
Size: 130x305cm



PARADE COLLECTION



5725 Fishbone Grey



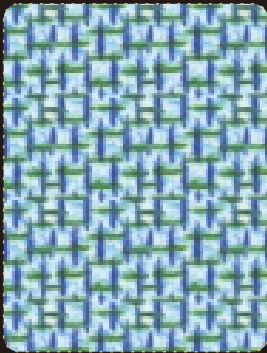
5726 Fishbone Blue



5727 Fishbone Yellow

DESIGNED BY GIULIO IACCHETTI

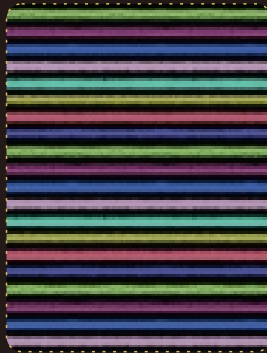
Finish : Lucida
Size: 130x305cm



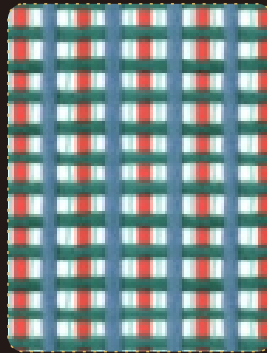
5743 Canvas Blue



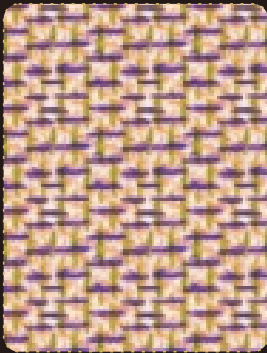
5746 Derby Green



5749 Furrows Black/Colors



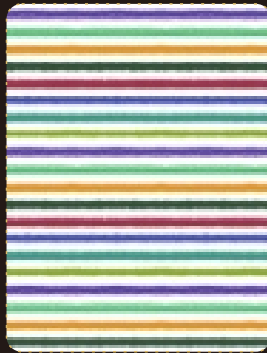
5752 Massaua Blue/Orange



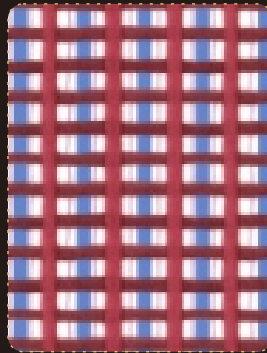
5744 Canvas Orange



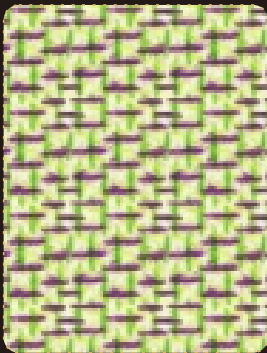
5747 Derby Red



5750 Furrows Colors



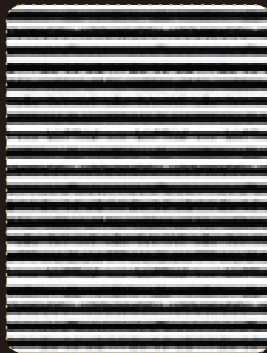
5753 Massaua Red/Blue



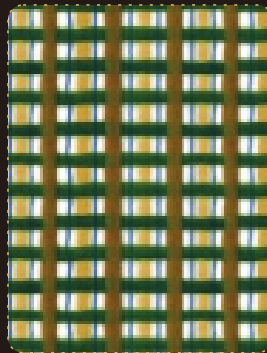
5745 Canvas Green



5748 Derby Yellow



5751 Furrows B/W



5754 Massaua Brown/Yellow

DESIGNED BY GIULIO IACCHETTI

Finish : Lucida
Size: 130x305cm

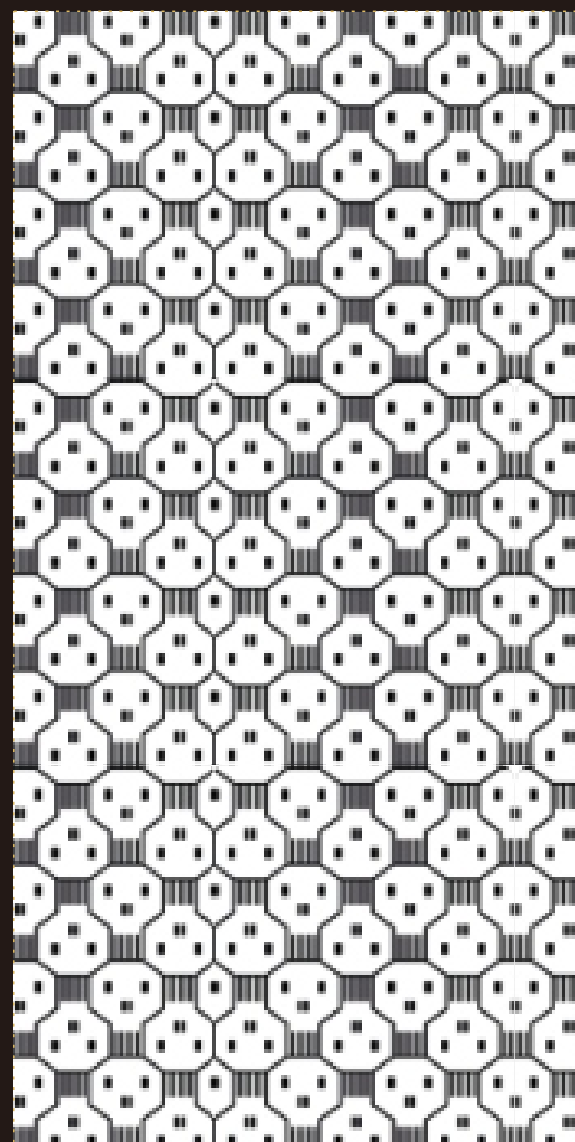


PARADE COLLECTION

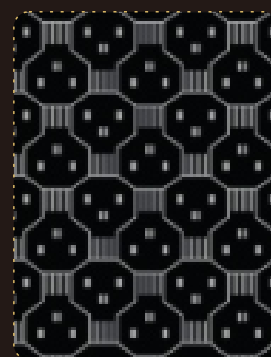


FEBO

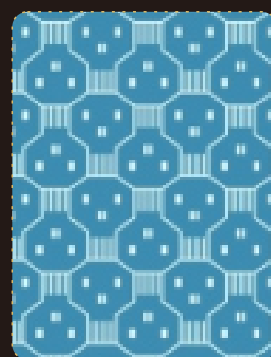
UGO NESPOLO



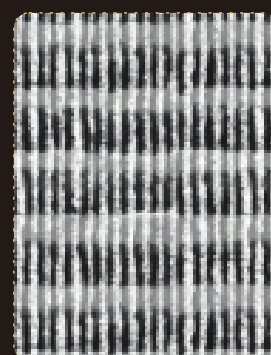
5728 Knock-out White



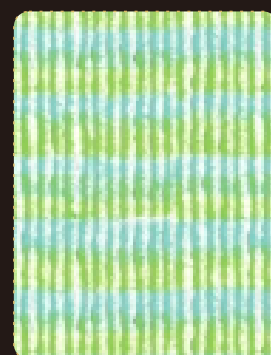
5729 Knock-Out Black



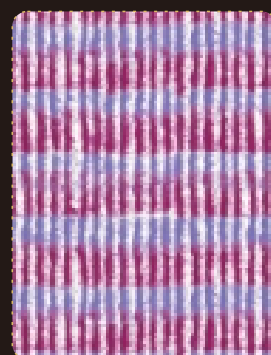
5730 Knock-Out Blue



5740 Betulla B/W



5741 Betulla Green



5742 Betulla Purple

DESIGNED BY GIULIO IACCHETTI

Finish : Lucida
Size: 130x305cm



FEBO



6113 Kitami



6116 San Paolo



6118 Liverpool



6120 Torino



6115 Praga



6111 Kiev



6112 Boston



6117 Dakar



6119 New Orleans



6114 Visby

DESIGNED BY UGO NESPOLO

Finish : Lucida
Size: 130x305cm

DESIGNED BY UGO NESPOLO

Finish : Lucida
Size: 130x305cm

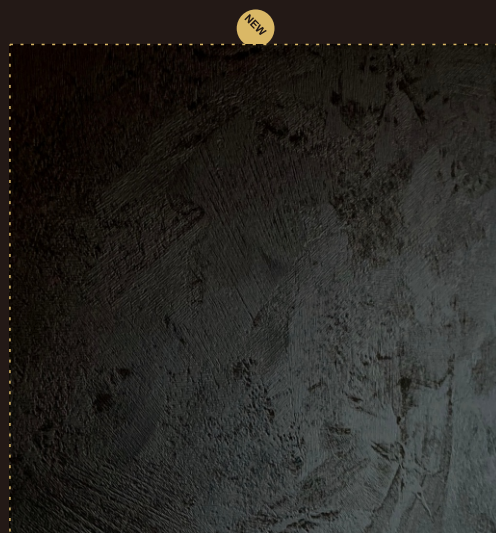


NEW

OSTUNI



879 Ostuni

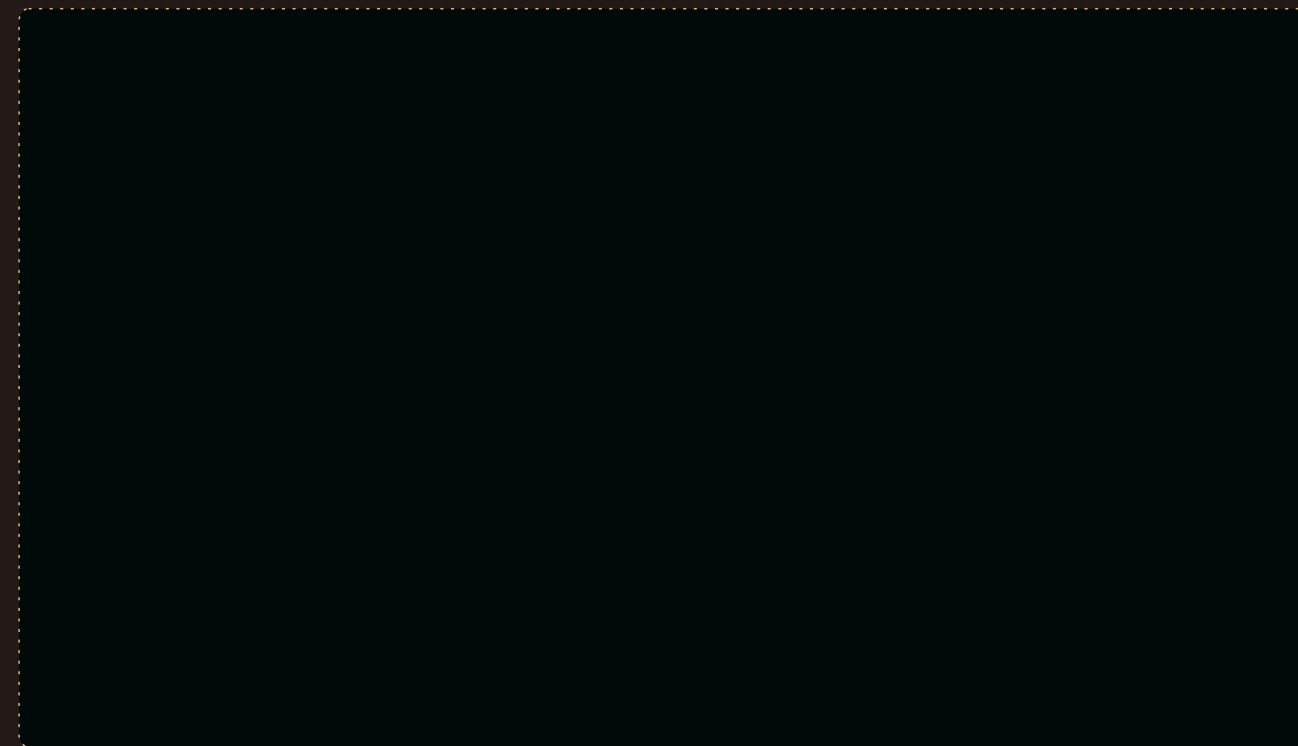


421 Ostuni

OSTUNI

Finish : Ostuni
Size: 130x305cm

POLARIS



2902 Noir Pol



2903 Gris Perle Pol



2907 Gris Foncé Pol



2909 Gris Graphite Pol

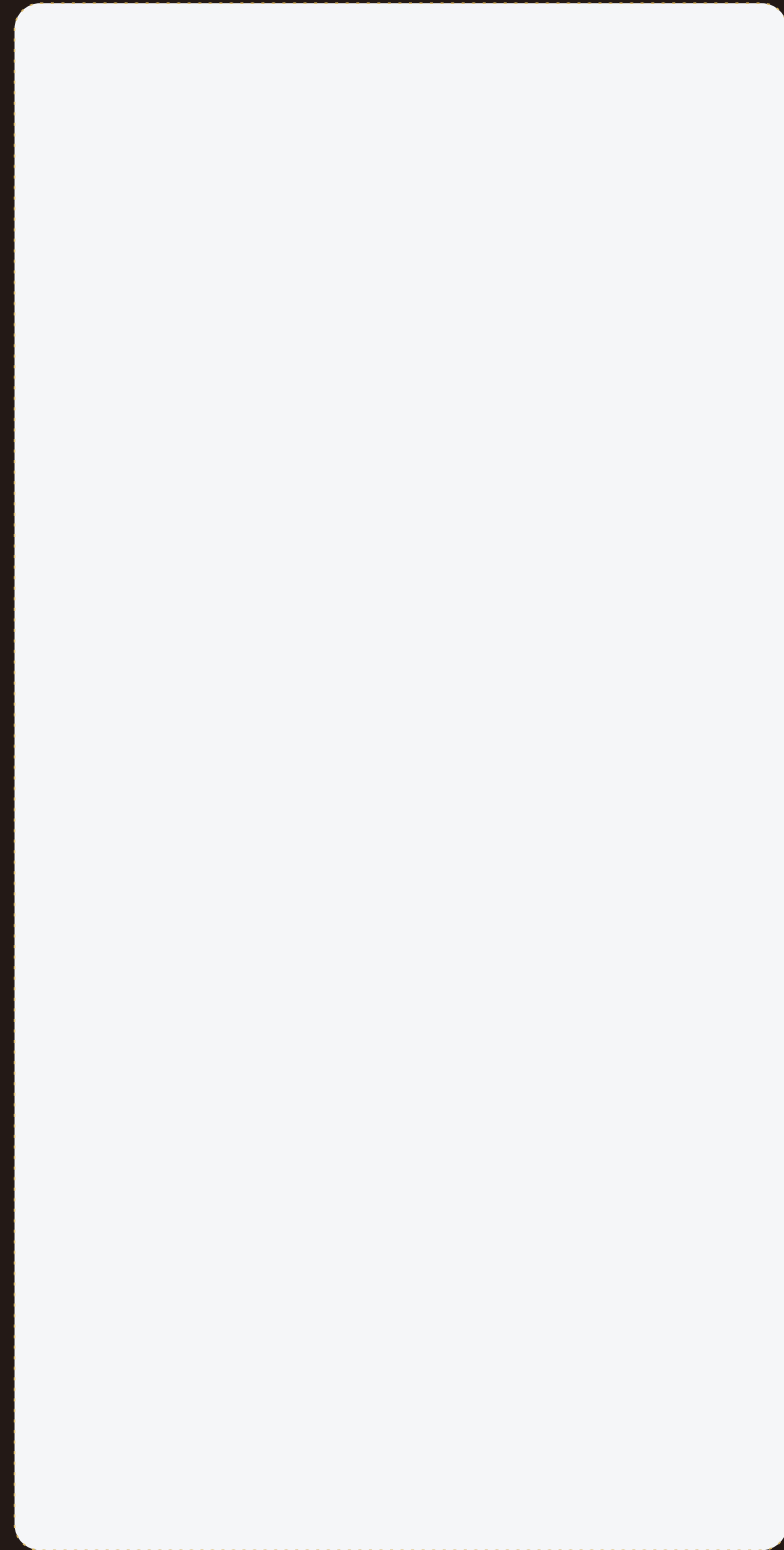
POLARIS

Finish : Polaris
Size: 130x305cm



POLARIS

Finish : Polaris
Size : 130x305cm



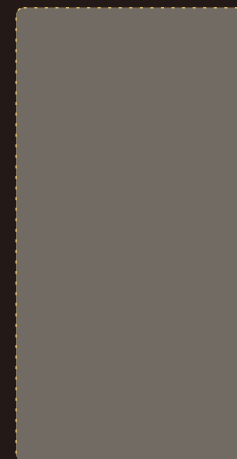
2904 Blanc Glace Pol



2910 Gris Clair Pol



2901 Sable Pol



2906 Gris Moyen Pol



2908 Sahara Pol



2905 Gris Cosmique Pol

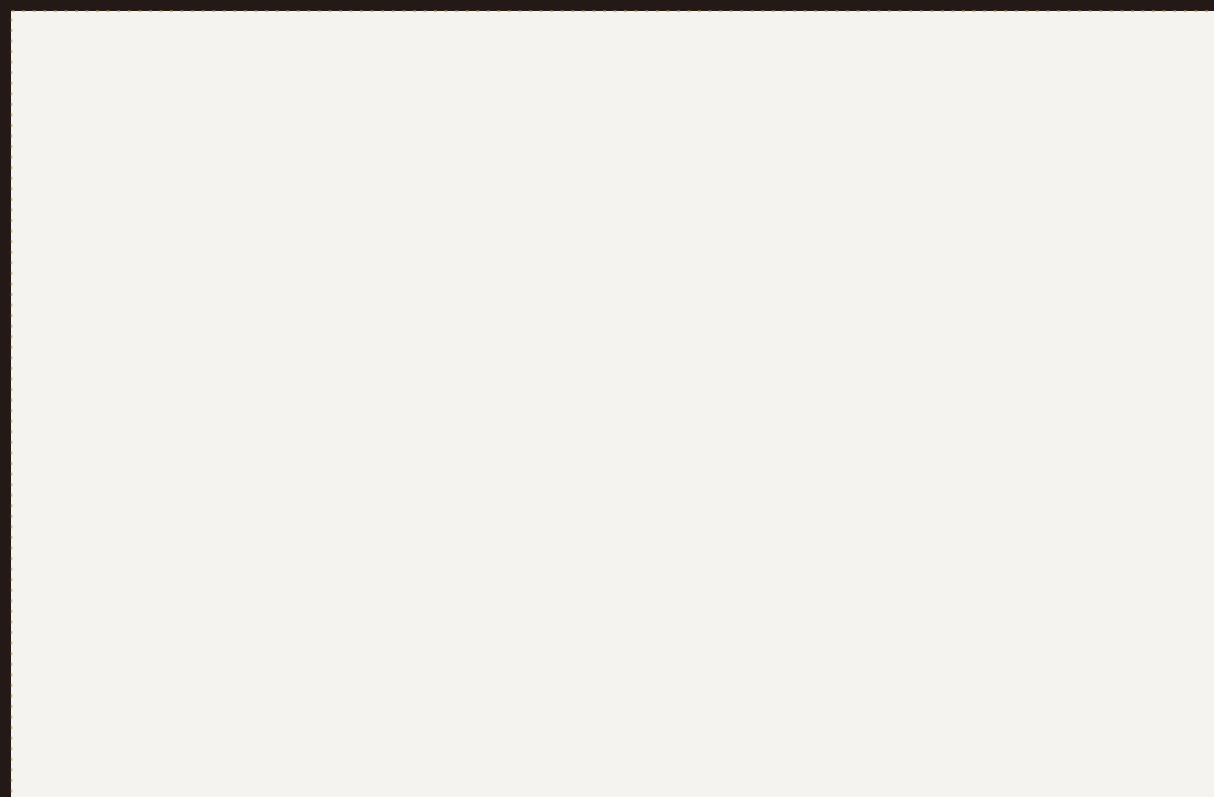


MAGNETICO



MAGNETICO

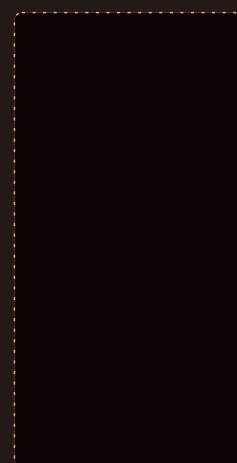
Finish : Lucida, Soft
Size: 125x305cm



406C Lucida 乳白色



879C Soft
墨灰色



421C Soft
墨黑

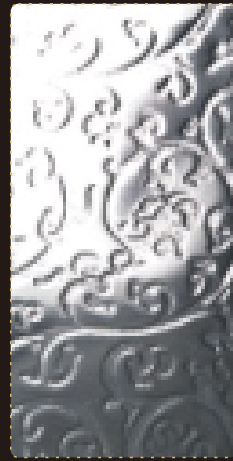


450C Soft
月桂绿

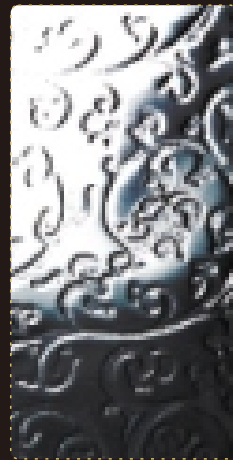


DROPS (VERTICAL USE ONLY)

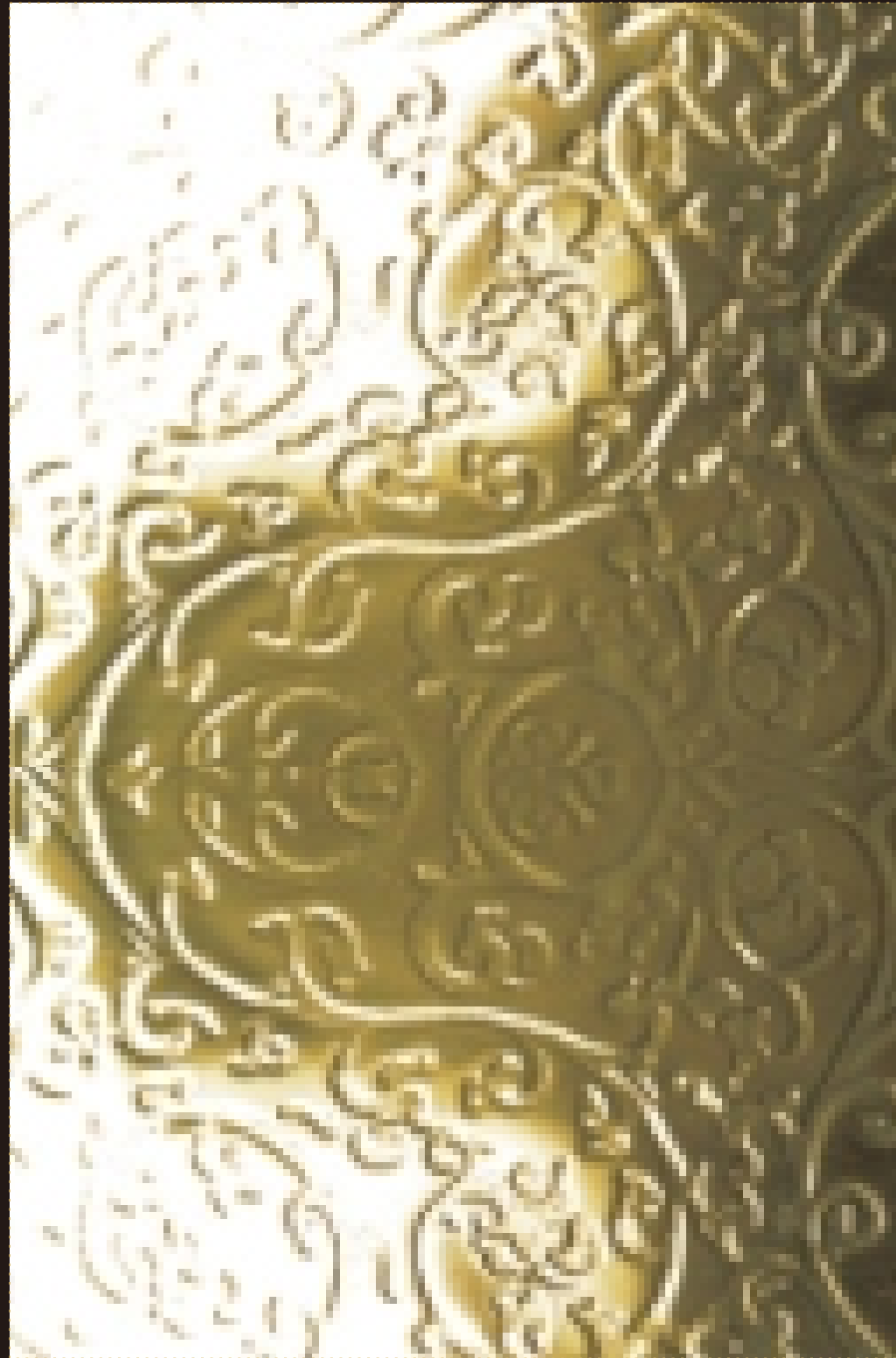
Finish : Drops
Size : 122x305cm



2705 Marrakech Silver



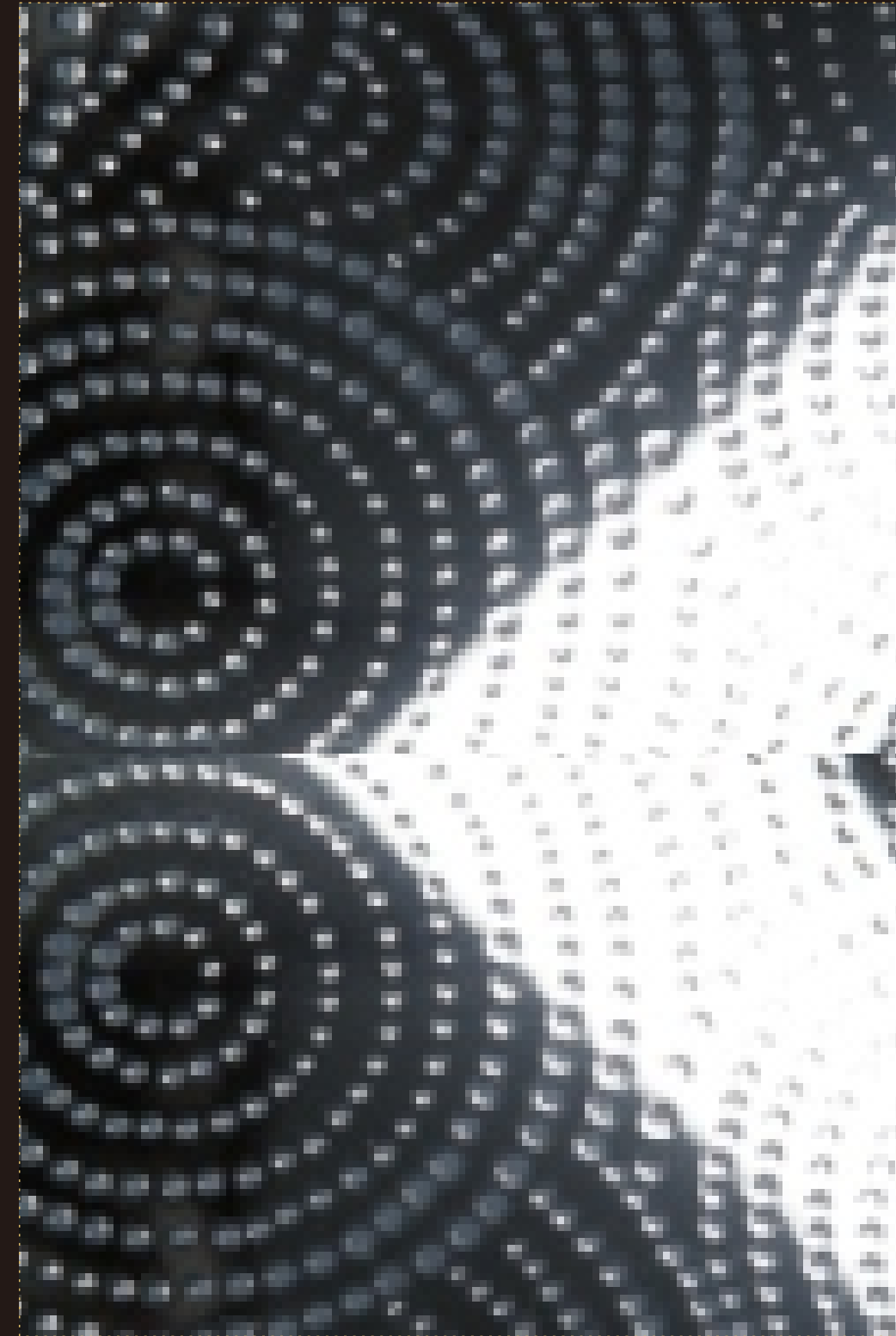
2711 Marrakech Steel



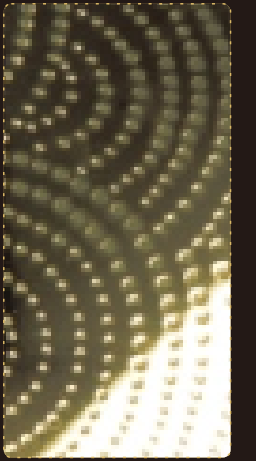
2708 Marrakech Gold

DROPS (VERTICAL USE ONLY)

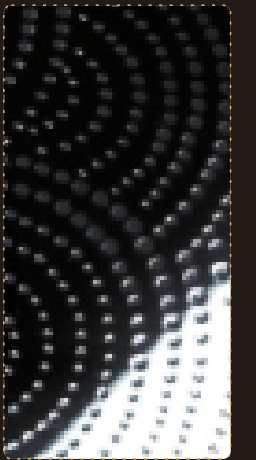
Finish : Drops
Size : 122x305cm



2702 Agadir Silver



2706 Agadir Gold

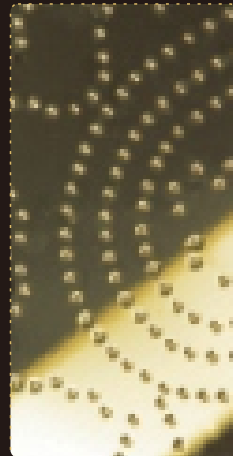


2709 Agadir Steel



DROPS (VERTICAL USE ONLY)

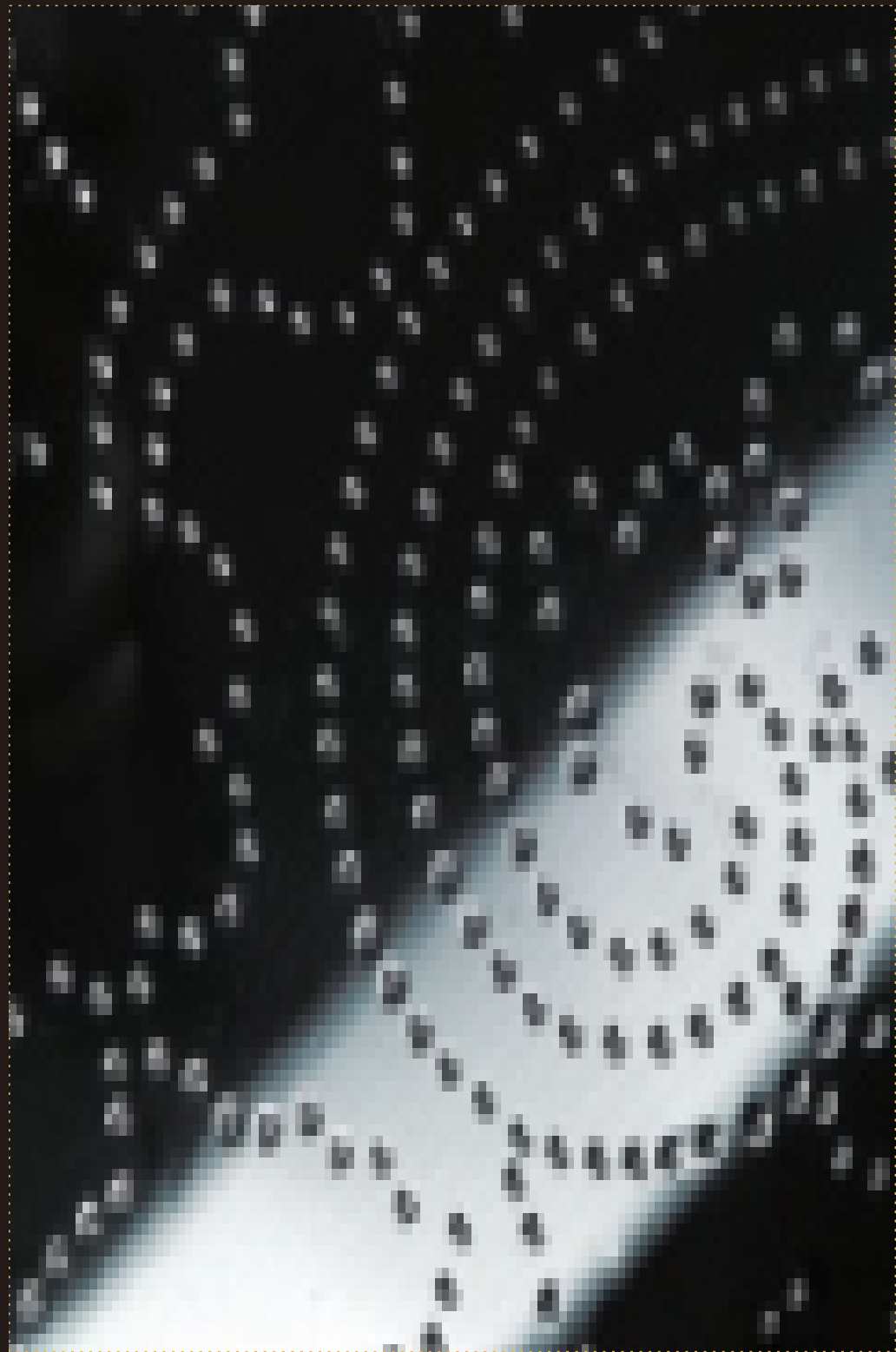
Finish : Drops
Size: 122x305cm



2707 Casablanca Gold



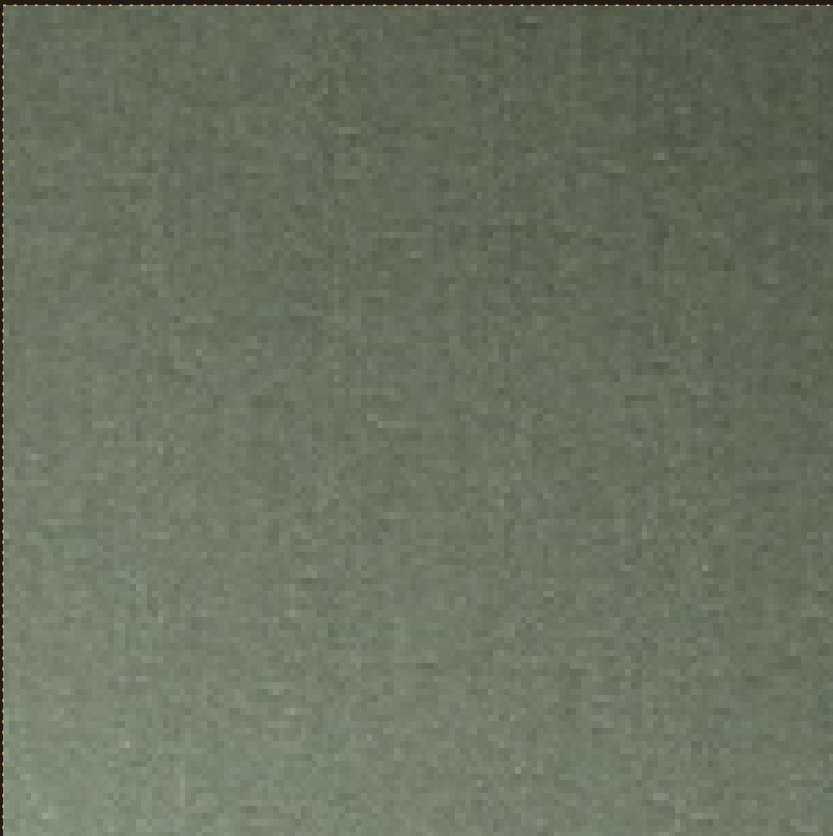
2704 Casablanca Silver



2710 Casablanca Steel



METALLI



726G

(VERTICAL USE ONLY)
Finish : Lucida
Size: 122x305cm

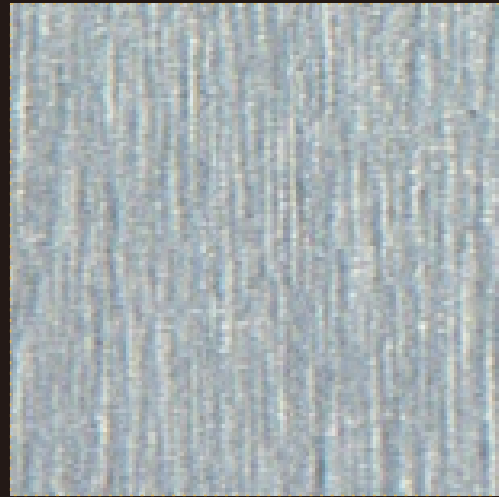


METALLI (VERTICAL USE ONLY)

Finish : Satin, Lucida, Morbida, Millerighe

Size: 122x244cm □ 122x305cm = 130x305cm □

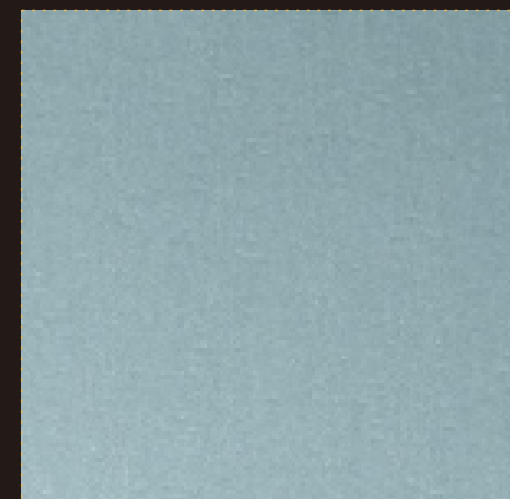
873 银丝 □ □



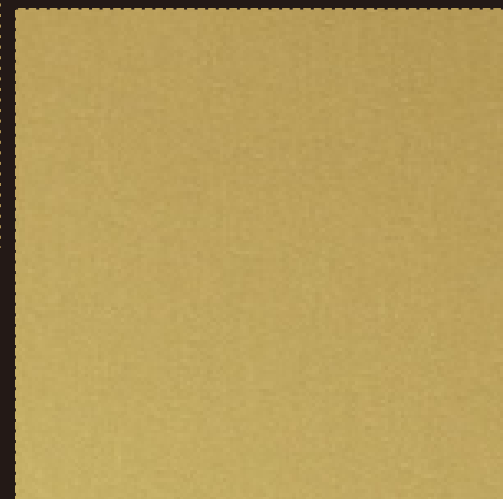
874 金丝 □



727 钨丝 □



880G =

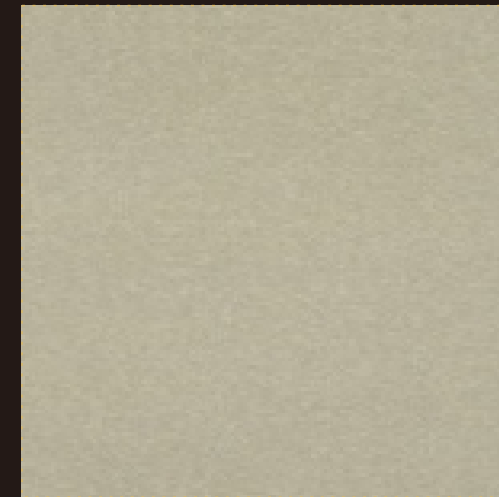


881G =

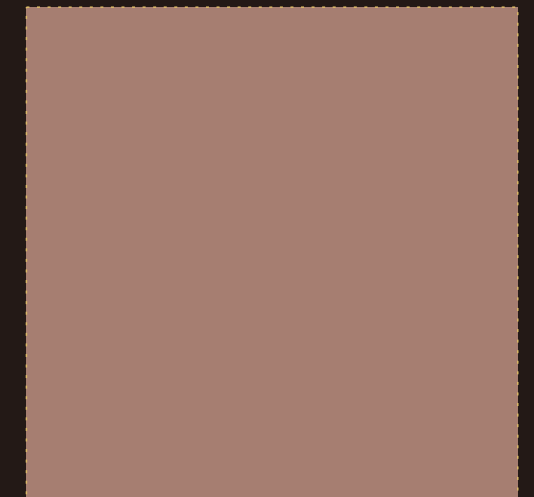
METALLI (VERTICAL USE ONLY)

Finish : Satin, Lucida, Morbida, Millerighe

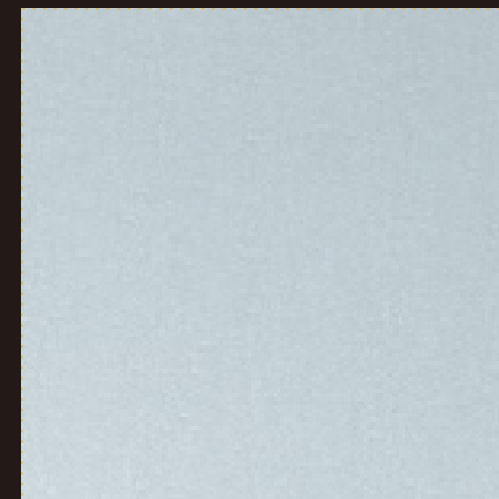
Size: 122x244cm □ 122x305cm = 130x305cm □



878 =



740 =



877 □ □





730 =



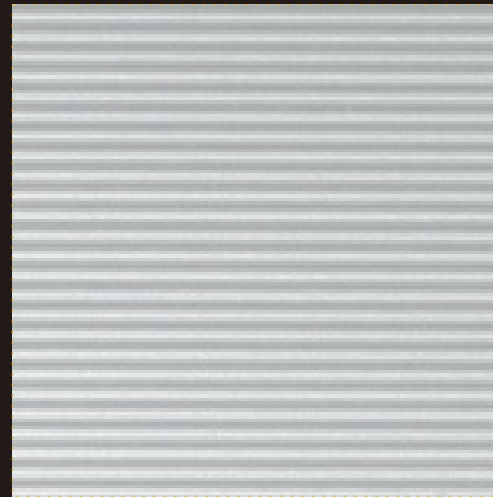
METALLI (VERTICAL USE ONLY)

Finish : Millerighe

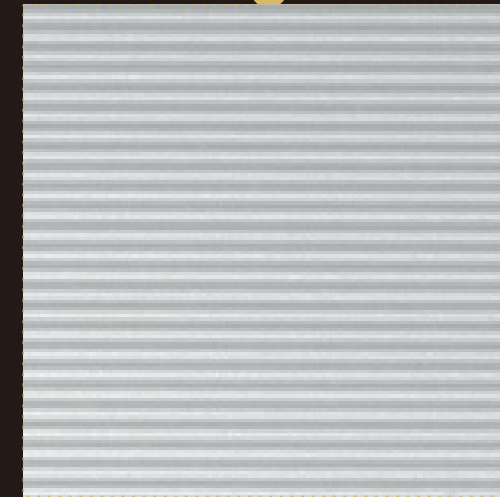
Size: 122x244cm  122x305cm 



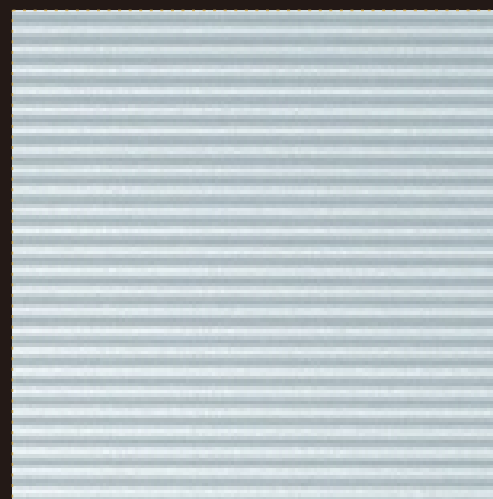
METAL EFFECT




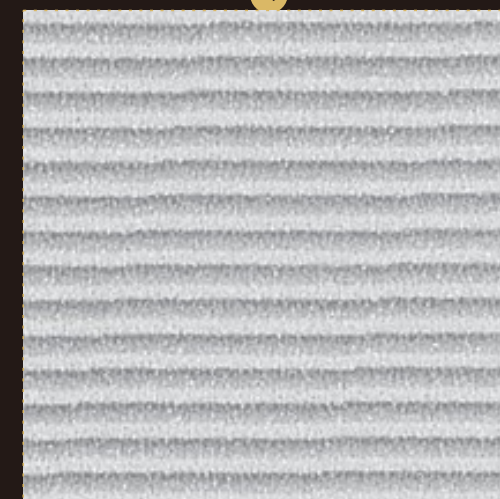
877E 



265E Vertical Line



880E 



243 Vertical Line

(VERTICAL USE ONLY)

Finish : Sei, Millerighe

Size: 130x305cm



METAL EFFECT (VERTICAL USE ONLY)

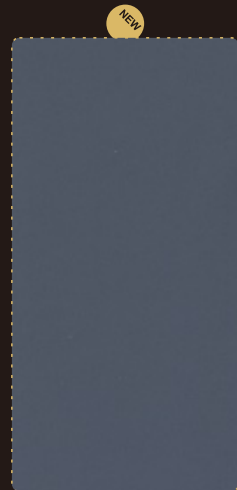
Finish : Papier, Satin
Size : 130x305cm



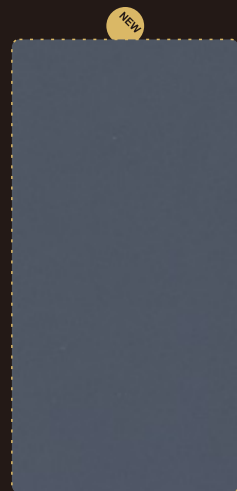
1927 Mercurio - Satin



1927 Mercurio - Papier



1928 Urano - Satin



1928 Urano - Papier

METAL EFFECT (VERTICAL USE ONLY)

Finish : Climb, Papier, Satin
Size : 130x305cm



1930 Marte - Climb



1929 Sahel - Papier



1931 Gobi - Papier



1921 Venere - Satin



1920 Saturno - Satin



2811 Mongolia - Climb



 ROCKS



2810 Cemento

ROCKS

Finish : Climb
Size : 130x305cm



ROCKS

Finish : Papier
Size : 130x305cm

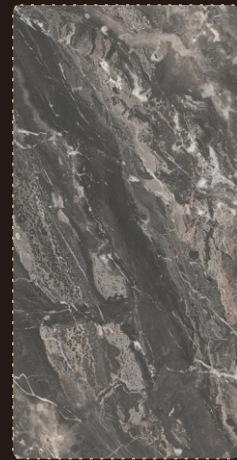
NEW



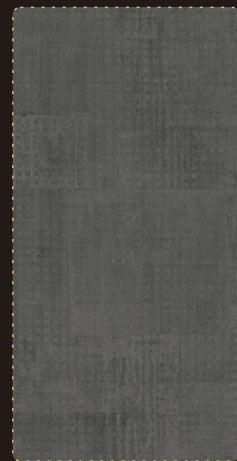
1459 Statuario



1453 Piombo



1456 Royale

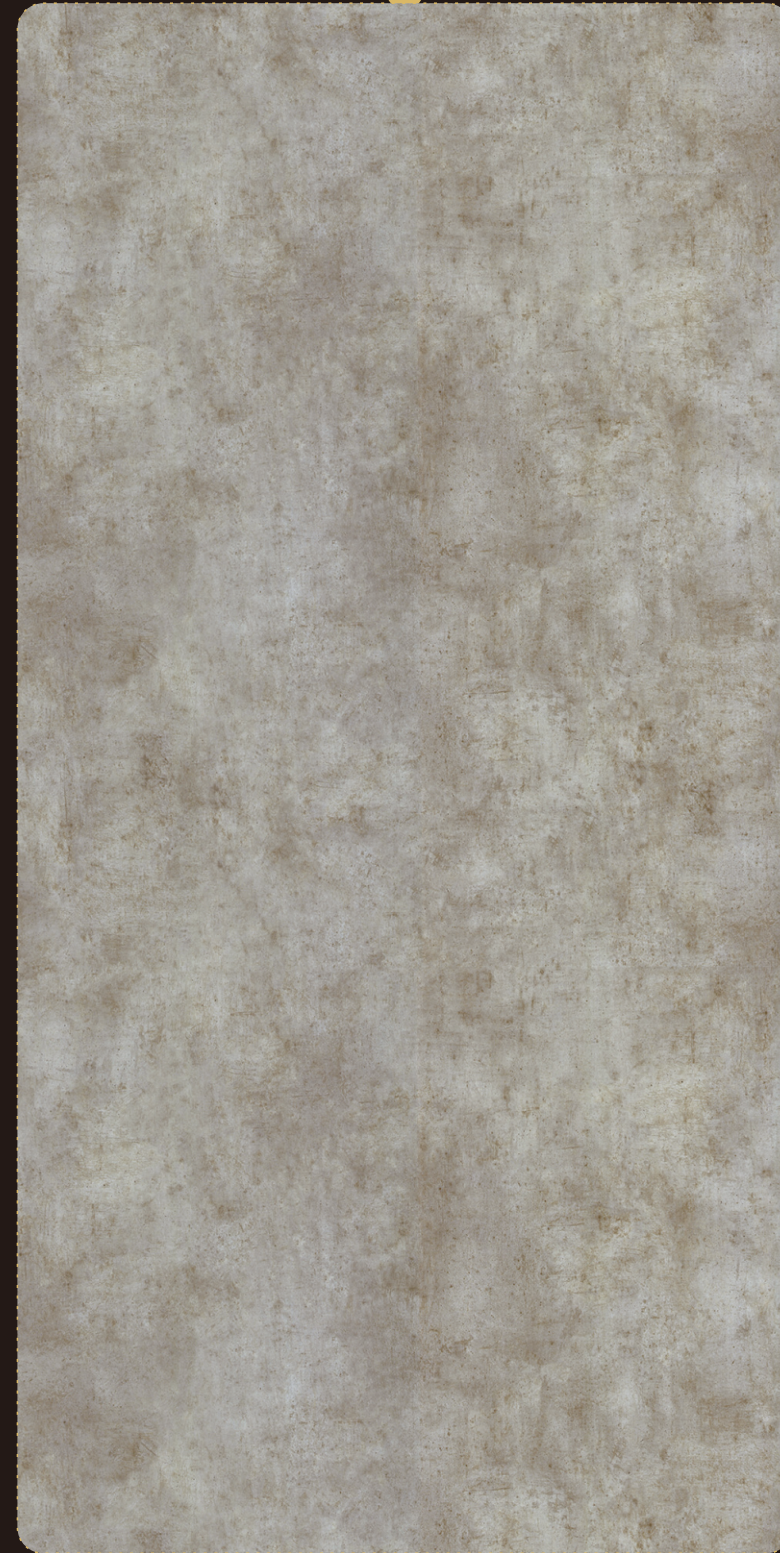


1458 Brooklyn

ROCKS

Finish : Climb
Size : 130x305cm

NEW



559 Petra



547 Tivoli Greige



546 Tivoli



545 Vulcano

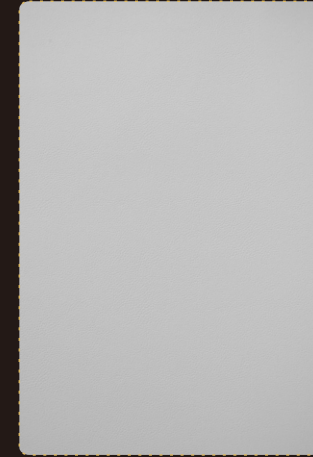




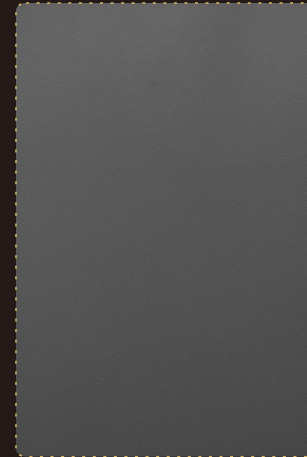
DIPLOS

Finish : Dharma (DH)

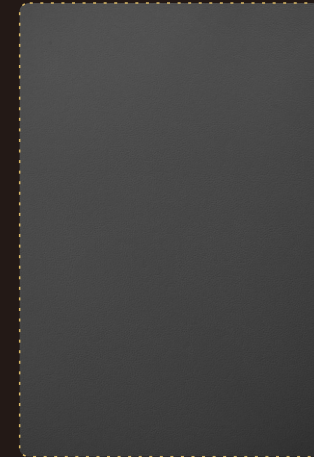
Size: 130x305cm



478DH Grigio Chiaro



1820DH Grigio Cosmico



879DH Grigio Grafite



DIPLOS

Finish : Climb
Size: 130x305cm



1967 Corallo Malindi

DIPLOS

Finish : Aquarma (AQ)
Size: 130x305cm



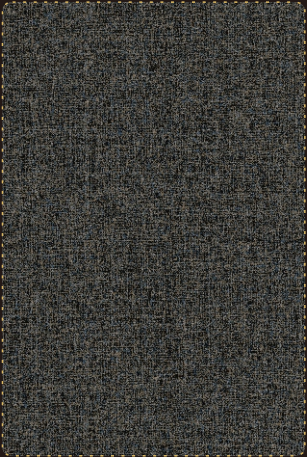
410AQ Bianco Ghiaccio



421AQ Nero



1966AQ Bouclé Persia



1950AQ Bouclé Prussia



1955AQ Montale Noli



1960AQ Fenice Iside



1957AQ Fenice Aker



1959AQ Fenice Amon





PATAGONIA

PATAGONIA

Finish : Grainwood
Size: 122x244cm / 130x305cm



1967 Corallo Malindi



1906 Pike Sal



1907 Pike Pimienta



1909 Pike Nuez



1910 Pike Café





LEGNI

LEGNI

Finish : Papier(P)
Size: 130x305cm

ABET LAMINATI 45 / 46



1968P 北歐白樺樹



620P 加拿大楓木



650P 德克薩斯樂木



607P 摩根白蠟木



674P 澳洲桉木



1609P 帕維亞山紋櫻桃



LEGNI

Finish : Holz(HT)
Size : 130x305cm



1948HT 阿根廷極光木



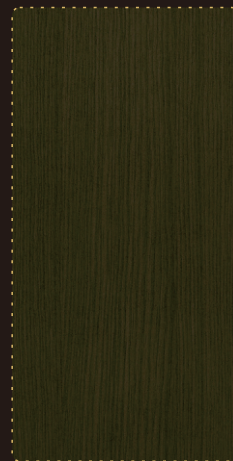
1949HT 冰島極光木



1961HT 挪威極光木



602HT 波西米亞橡木



657HT 夢菲斯柞木



601HT 帝國橡木

LEGNI

Finish : Cross(Y)
Size : 130x305cm



1386Y 南非橫紋影木



1619Y 橫紋櫟木



1381Y 摩卡橫橡木



1382Y 烟絲橫橡木



LEGNI

Finish : Root(T)

Size: 122x244cm □ 130x305cm □



1396T 金絲鐵楠木 □



1394T 納尼亞雪橡 □



602T 波西米亞橡木 □



1391T 古城玫瑰木 □



1392T 摩卡古楠木 □

LEGNI

Finish : Root(T)

Size: 122x244cm □ 130x305cm □



670T 阿爾蒂科橡木 □



1952T 阿普里沉香



662T 丹尼拉柚木 □



1954T 維爾滋沉香



673T 繽客美諾橡木 □



1962T 瑞典極光木 □



605T 飄花野柚木 □



1395T 琥珀香柚木 □



669T 普里米蒂沃橡木 □



358T 亞馬遜胡桃 □



677T 古橡之韻 □



LEGNI

Finish : Grainwood(W)

Size: 122x244cm □ 130x305cm □



381W 道斯松木 □



664W 馬貝拉櫟木 □



631W 必利斯柚木 □



633W 西非金色欖仁木 □



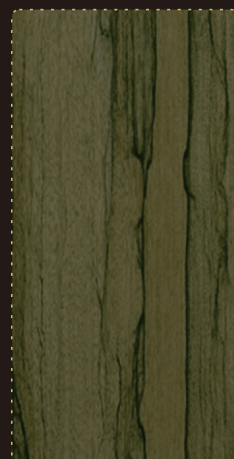
608W 銀灰白蠟木 □



626W 蒙德里安胡桃木 □



649W 桑托斯櫟木 □



634W 西非夾黑欖仁木 □

LEGNI

Finish : Microline(M)

Size: 122x244cm □ 130x305cm □



388M 白松木 □



381M 道斯松木 □



387M 格斯松木 □



391M 褐絲松木 □



659M 勃爾尼松木 □



660M 薩沃依松木 □



661M 錢伯絲松木 □



392M 烏斯松木 □



LEGNI

Finish : Sei
Size: 122x244cm 130x305cm



381 道斯松木



1619 橫紋櫟木



602 波西米亞橡木



388 白松木



1381 摩卡橫橡木



387 格斯松木



1395 琥珀香柚木

LEGNI

Finish : Sei
Size: 122x244cm 130x305cm



1678 白楓木



659 勒爾尼松木



620 加拿大楓木



1384 波斯白蠟木



650 德克薩斯櫟木



1386 南非橫紋影木



385 天然楓木



639 英國榆木



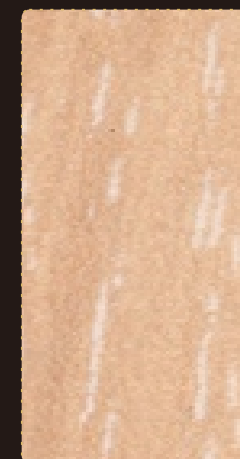
1611 貝加爾櫻桃



660 薩沃依松木



619 雲霧灰楓木



383 亞歷山大櫟木



321 馬來柚木



661 錢伯絲松木



LEGNI

Finish : Sei
Size: 122x244cm



370 經典英國榆木



662 丹尼拉柚木



1389 落基金胡桃



391 褐絲松木



1621 馬爾代夫柚木



1637 瑞士山紋梨木



1609 帕維亞山紋櫻桃



648 聖多斯櫻桃木



312 華貴鐵刀木



1329 博薩胡桃木



1354 現代斑馬木



1373 挪威桃花心木



313 俊朗鐵刀木

LEGNI

Finish : Sei
Size: 122x244cm



640 撒哈拉胡桃



1355 乞力馬扎羅橡木



658 比利牛斯橡木



1387 非洲鱷木紋



601 帝國橡木



656 田納西櫟木



1612 蘇門答臘柚木



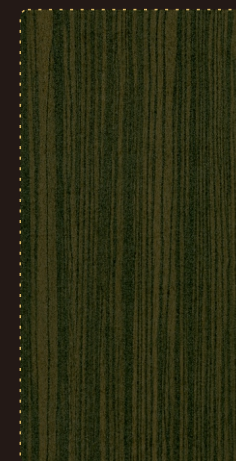
358 亞馬遜胡桃



1382 烟絲橫橡木



657 夢菲斯櫟木



1318 東方檀木



LEGNI

Finish : Sei
Size: 122x244cm



1388 幻影斑馬木



1383 拿鐵橡木



604 極地杉木



607 摩根白蠟木



649 桑托斯櫟木



606 阿里卡松木



603 黎巴嫩雪松



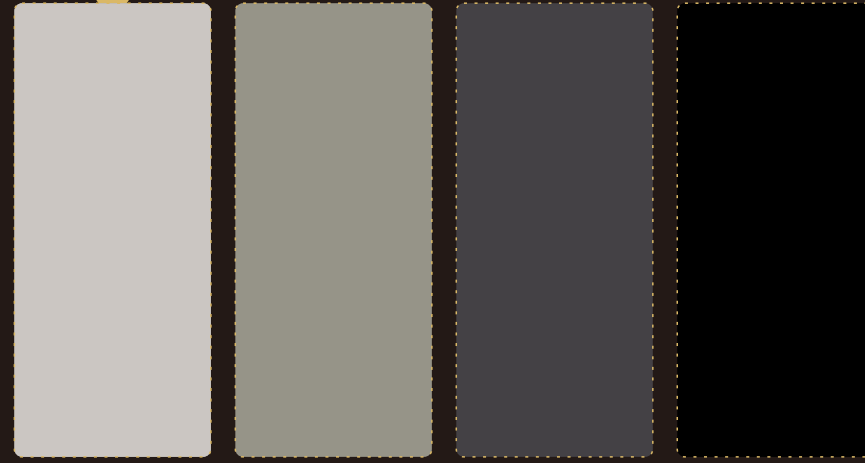
COLOURS & TEXTURES



BLACK . WHITE & GREY

Finish : Lucida(G), Cross(Y), Grainwood(W), Millerighe(E)
Size: 122x244cm □ 130x305cm □

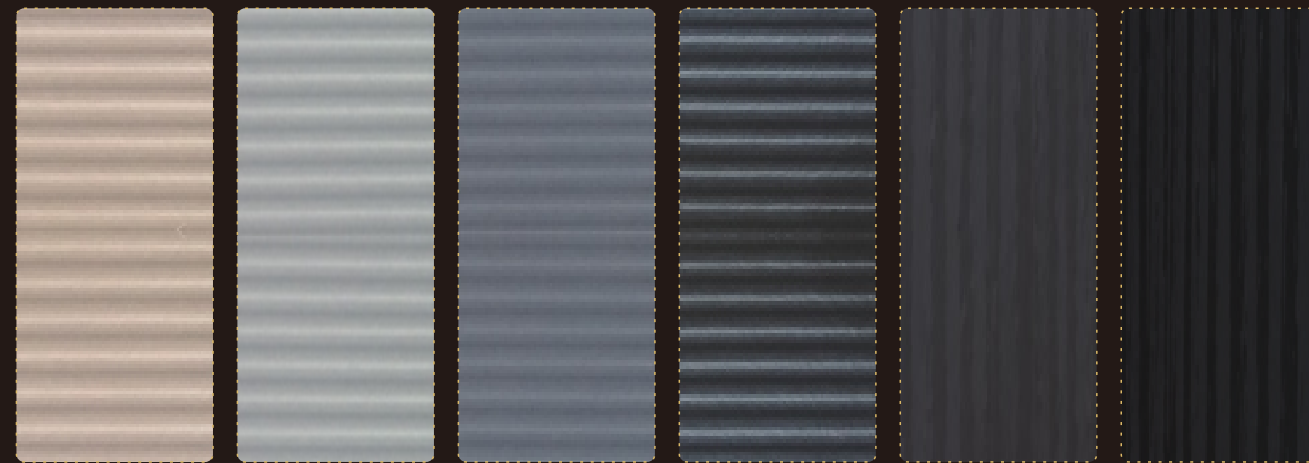
NEW



413G 米灰色 □ 1810G 鐵灰色 □ 879G 墨灰色 □ 421G 墨黑 □



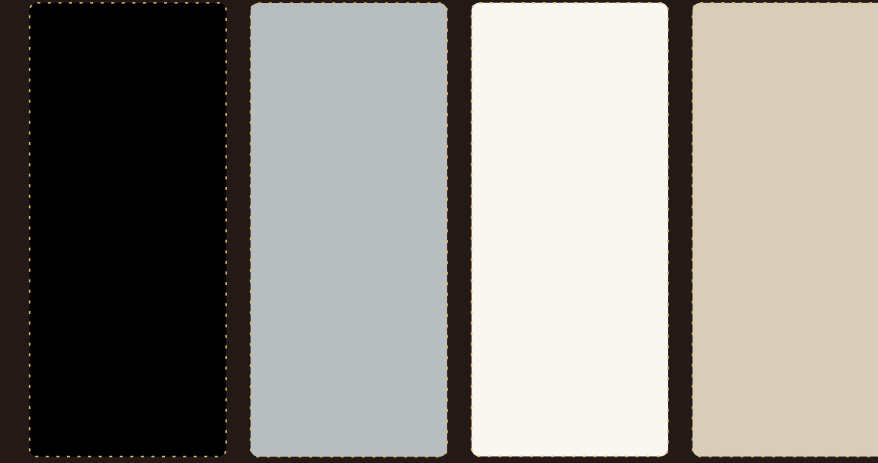
405Y 瓷器白 □ 406Y 乳白色 □ 1832Y 風暴灰 □ 879Y 墨灰色 □ 421Y 墨黑 □



416E 駱駝絨 □ 478E 淺灰色 □ 870E 霧灰色 □ 879E 墨灰色 □ 879W 墨灰色 □ 421W 墨黑 □

BLACK . WHITE & GREY

Finish : Full-colour(A), Satin(N), Grana(F)
Size: 122x244cm □ 130x305cm □



421A 墨黑 □ 475A 曬灰色 □ 411A 奶油白 □ 414A 沙土色 □



421N 墨黑 □ 879N 墨灰色 □ 478N 淺灰色 □ 411N 奶油白 □ 406N 乳白色 □ 410N 冰川白 □

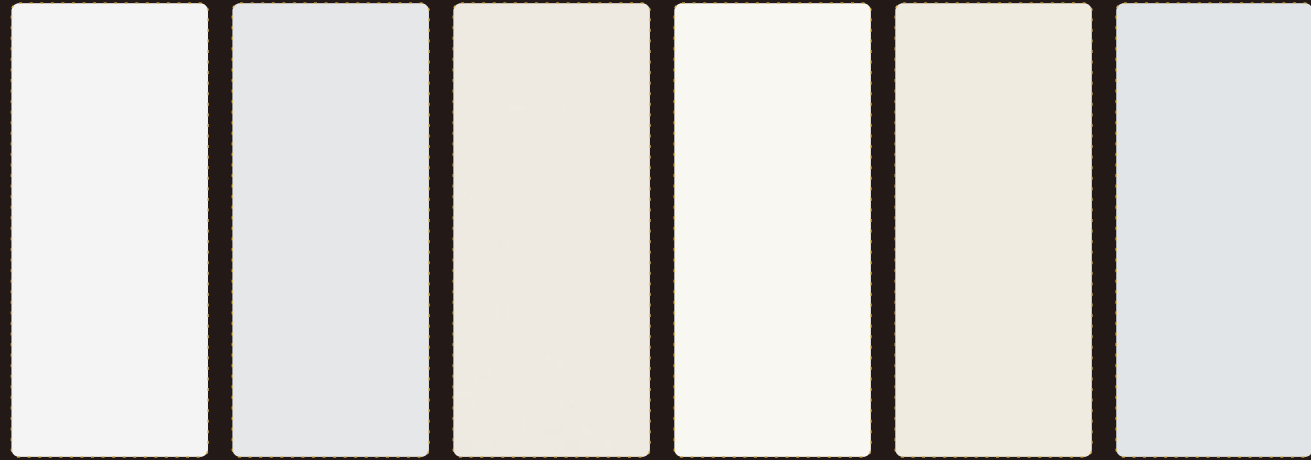


837F 駝褐色 □ 893F 陶褐色 □ 418F 雲霧灰 □ 810F 淺米色 □ 411F 奶油白 □ 410F 冰川白 □

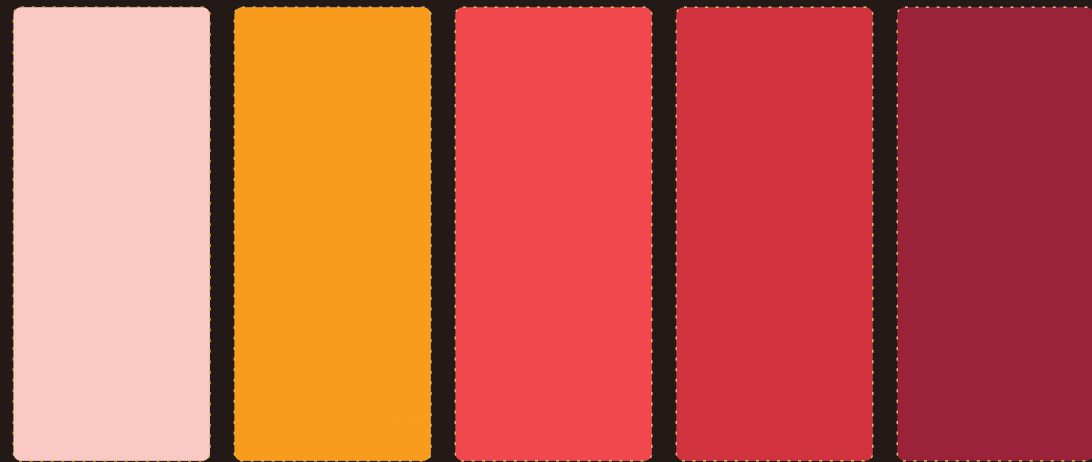


BRIGHT COLORS

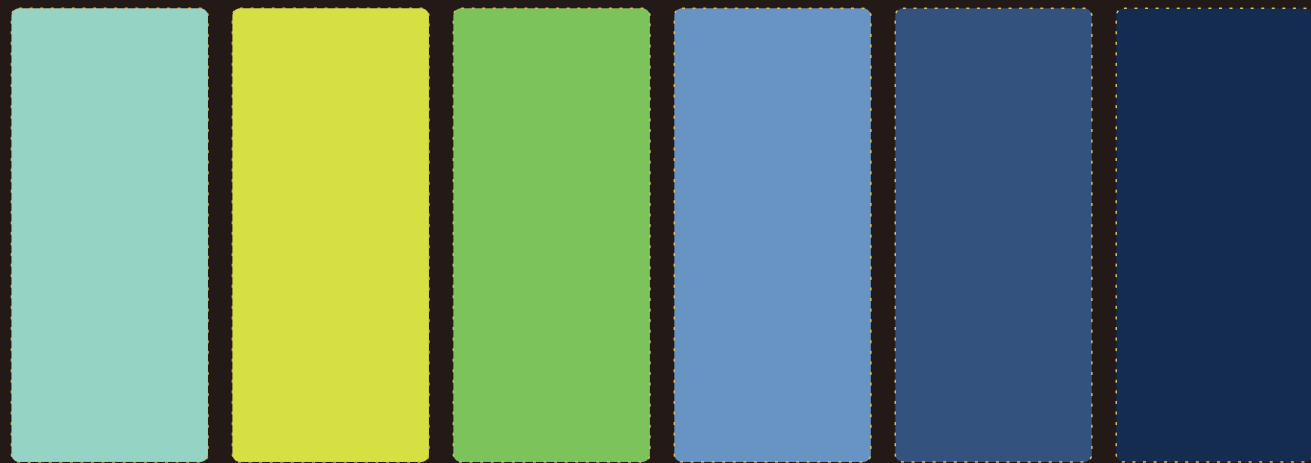
Finish : Lucida(G)
Size: 122x244cm 130x305cm



405G 瓷器白 410G 冰川白 406G 乳白色 411G 奶油白 810G 淺米色 854G 銀藍白



828G 淡粉紅 1812G 陽光橙 823G 探戈紅 431G 櫻桃紅 435G 朱紅



846G 淡青綠 1850G 綠黃色 460G 翠綠 484G 蔚藍色 849G 孔雀藍 1804G 深寶藍

BRIGHT COLORS

Finish : Millgurle(E)
Size: 122x244cm 130x305cm



410E 冰川白 411E 奶油白 810E 淺米色



431E 櫻桃紅 834E 東方紅 860E 葵花黃 468E 深黃色 463E 檸檬黃 828E 淡粉紅



428E 深紫藍 430E 品紫藍 484E 蔚藍色 460E 翠綠 441E 香檸檬綠 846E 淡青綠



GRAINWOOD

Finish : Grainwood(W)

Size: 122x244cm □ 130x305cm □



410W 冰川白 □ 406W 乳白色 □ 810W 淺米色 □ 813W 羊毛絨 □ 478W 淺灰色 □ 870W 霧灰色 □



869W 狐狸灰 □ 1816W 沙漠灰 □ 893W 陶褐色 □ 892W 土褐色 □ 1820W 海豚灰 □ 897W 深褐色 □



842W 淺橄欖 □ 891W 蘇格蘭黃 □ 831W 朱雀紅 □ 431W 櫻桃紅 □ 435W 朱紅 □ 836W 嫣紅 □

MICROLINE

Finish : Microline(M), Grana(F)

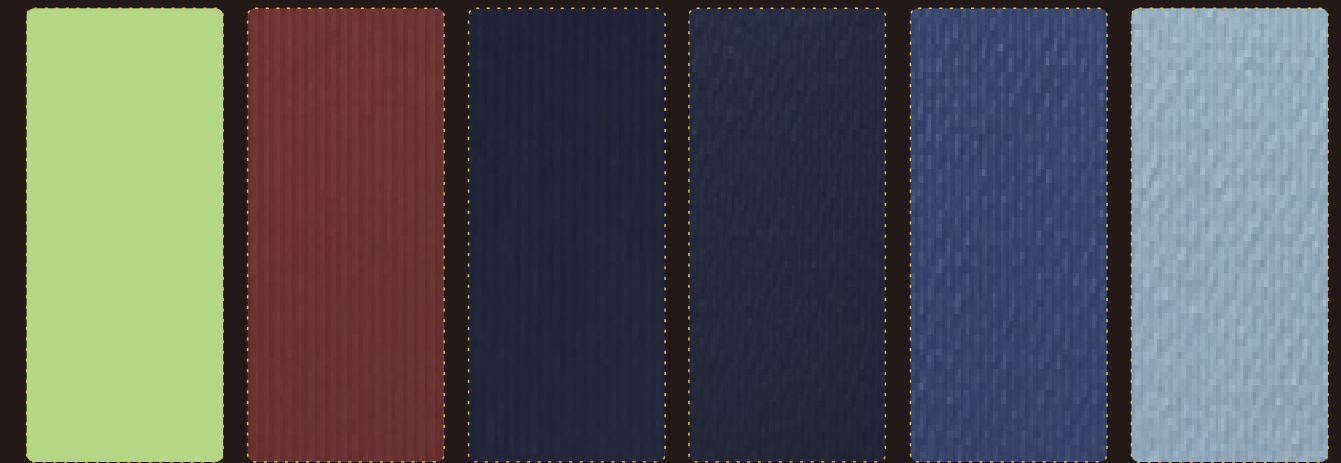
Size: 122x244cm □ 130x305cm □



868M 陶坯灰 □ 869M 狐狸灰 □ 420M 胡椒灰 □ 810M 淺米色 □ 411M 奶油白 □ 410M 冰川白 □



893M 陶褐色 □ 871M 中灰色 □ 477M 斑鳩灰 □ 854M 銀藍白 □ 425M 石南紫 □ 828M 淡粉紅 □



441M 香檳綠 □ 831M 朱雀紅 □ 1804M 深寶藍 □ 1804F 深寶藍 □ 496F 幽藍 □ 858F 深灰藍 □





COLOURS

YELLOW . RED & PURPLE

ABET LAMINATI 65 / 66

Finish : Sei

Size: 122x244cm □ 130x305cm □



463 檸檬黃 □



468 深黃色 □



860 葵花黃 □



861 橙皮黃 □



834 東方紅 □



431 櫻桃紅 □



891 蘇格蘭黃 □



432 陶紅 □



831 朱雀紅 □



435 朱紅 □



836 嫣紅 □



424 紫羅蘭 □



425 石南紫 □



828 淡粉紅 □



830 亮粉紅 □



494 淺玫瑰 □



427 亮玫瑰 □


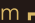


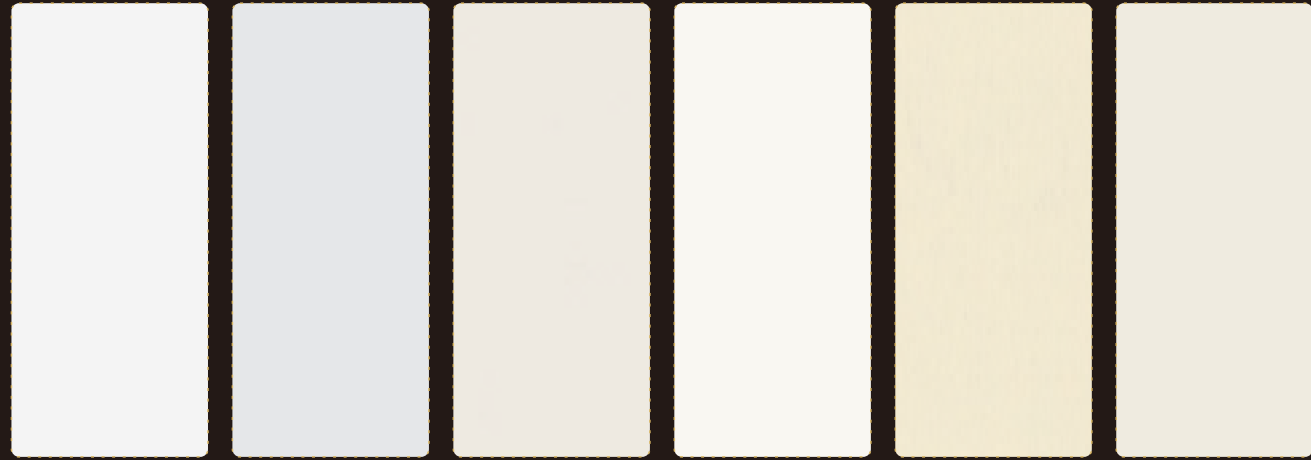
498 百合紫 □





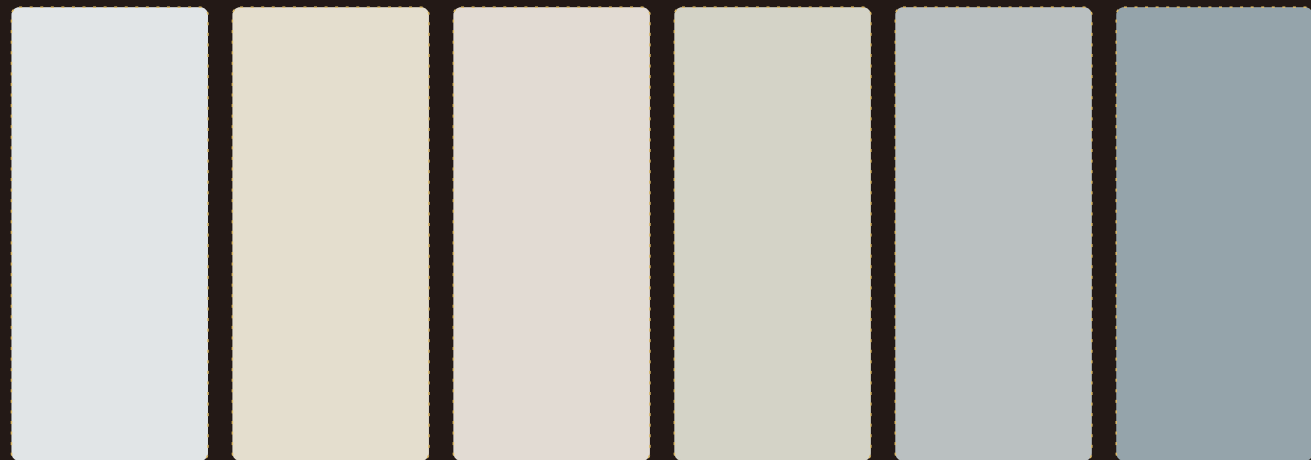
BLACK . WHITE & GREY



Finish : Sei

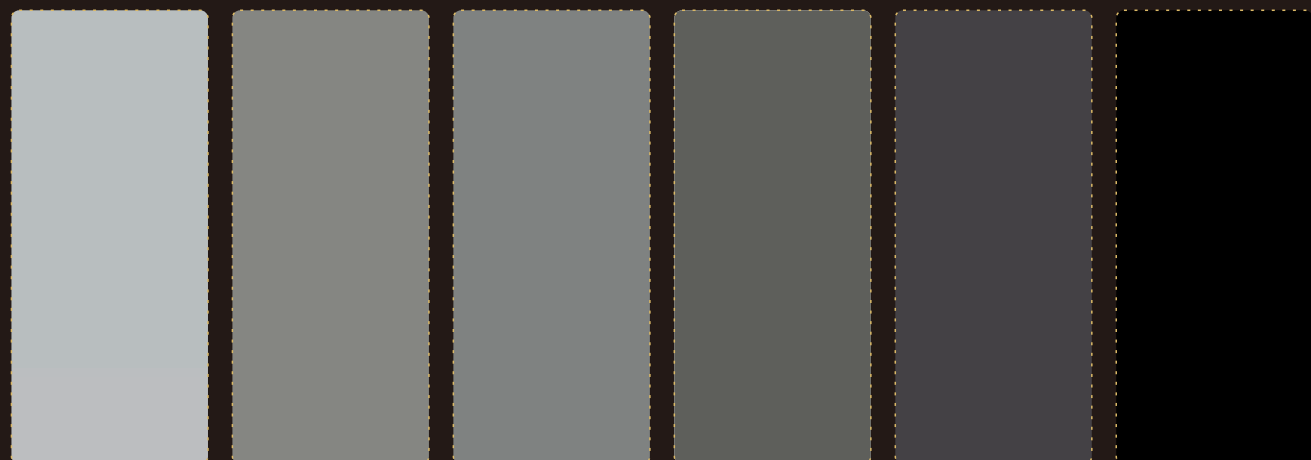
Size: 122x244cm  130x305cm 





405 瓷器白  410 冰川白  406 乳白色  411 奶油白  1813 玉蘭白  810 淺米色 



854 銀藍白  418 雲霧灰  409 石膏白  478 淺灰色  1819 時尚灰  477 斑鳩灰 



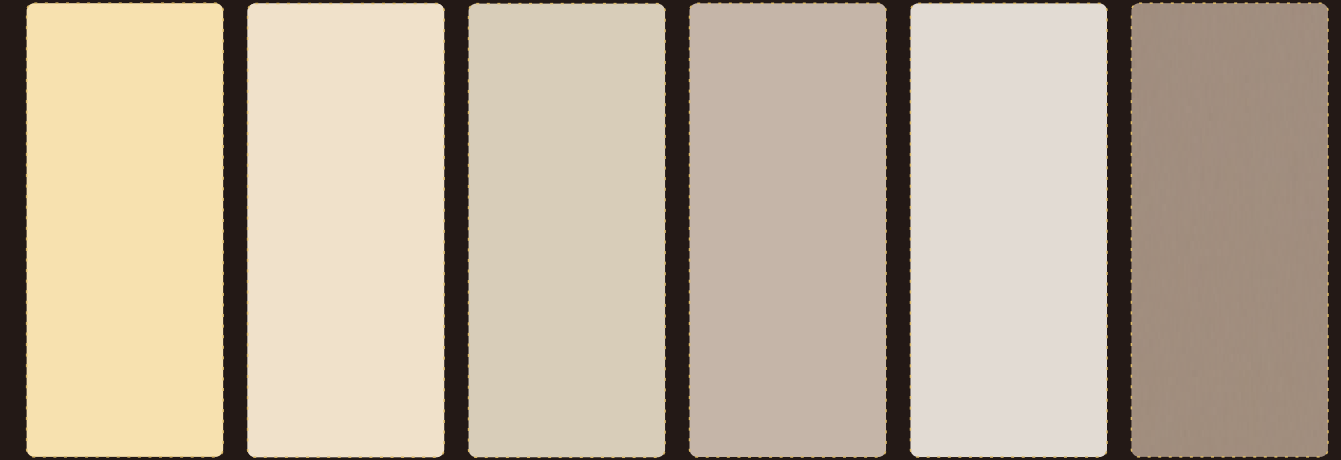
475 曉灰色  870 霧灰色  871 中灰色  472 深灰色  879 墨灰色  421 墨黑 

NEUTRAL TONES

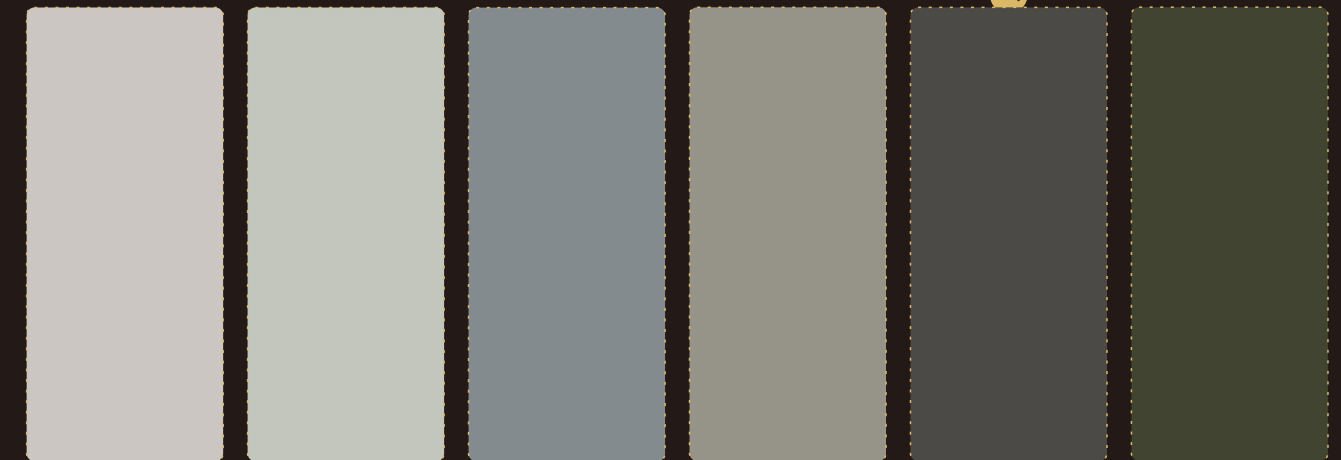
Finish : Sei


Size: 122x244cm  130x305cm 

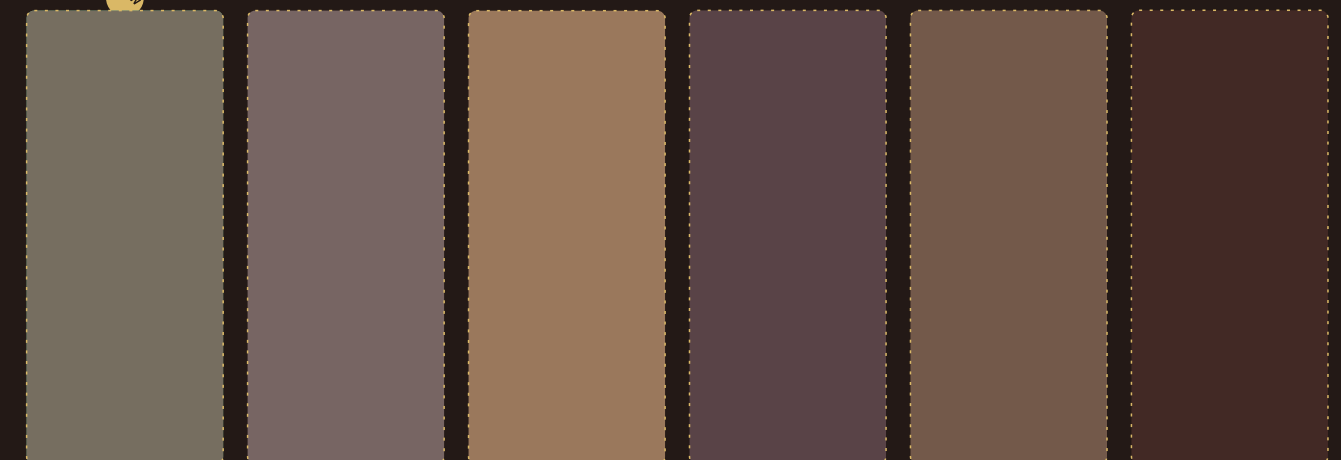
ABET LAMINATI 67 / 68




412 象牙黃  813 羊毛絨  414 沙土色  416 駱駝絨  869 狐狸灰  1816 沙漠灰 



413 米灰色  479 灰色  480 鉛灰色  1810 鐵灰色  1946 大地褐  1820 海豚灰 



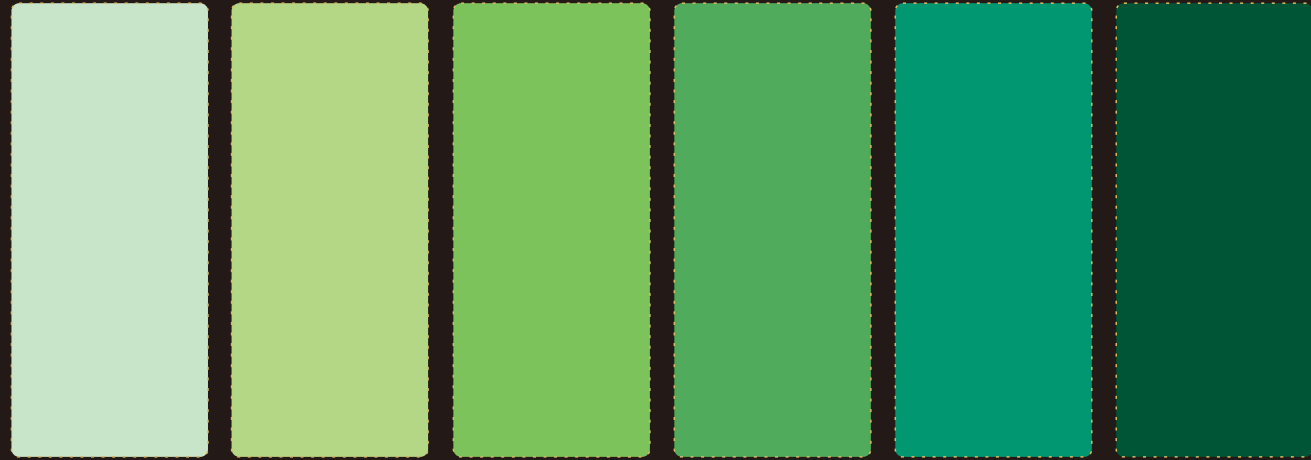
1945 大地棕  893 陶褐色  892 土褐色  837 駝褐色  894 棕熊褐  898 咖啡棕 



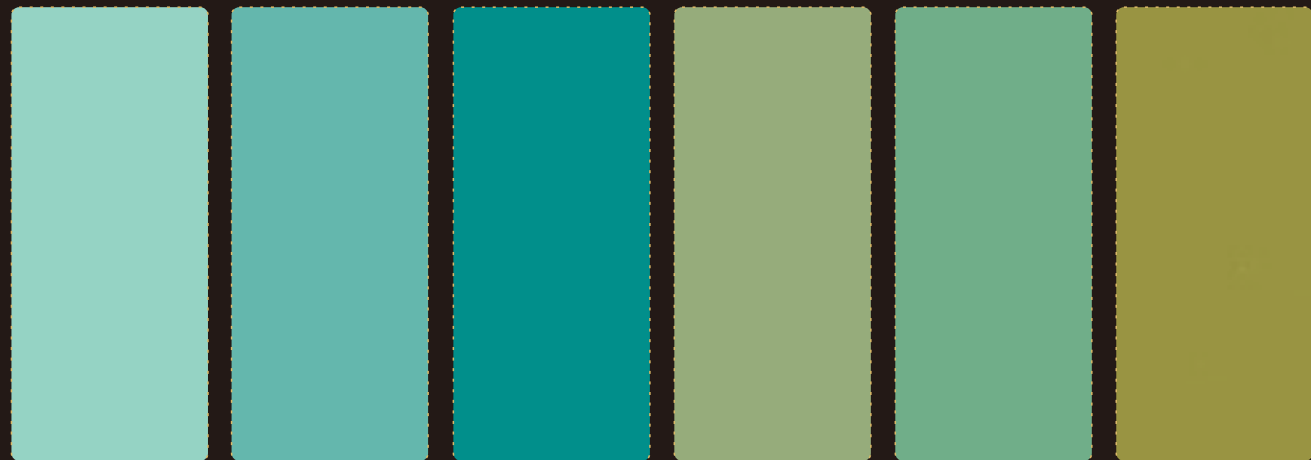
GREEN

Finish : Sei

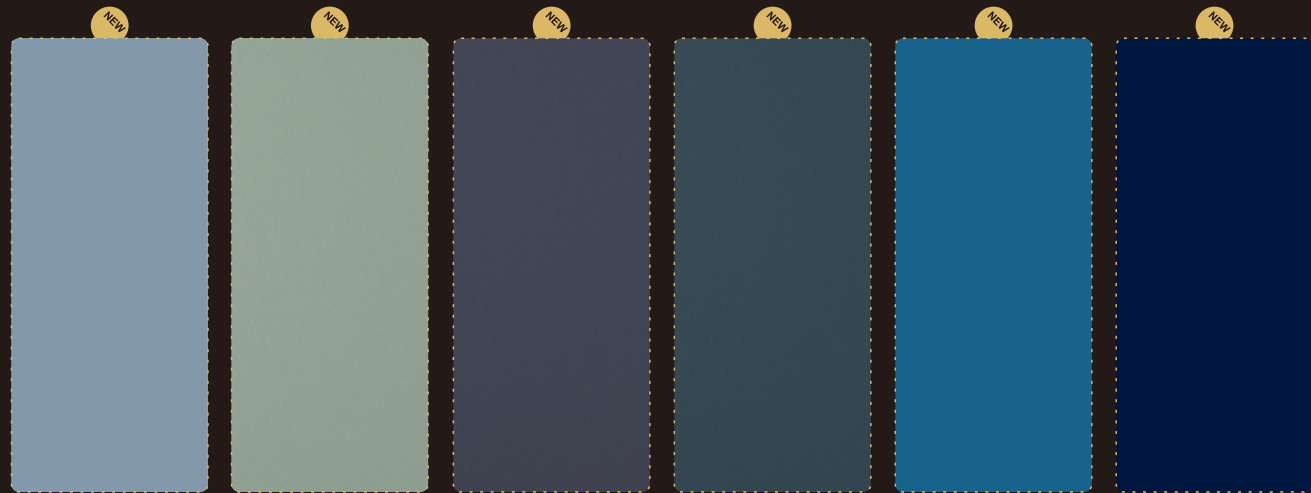
Size: 122x244cm 130x305cm



454 初春綠 441 香櫟綠 460 翠綠 451 常青綠 845 寶石綠 440 翡翠綠



844 淡青綠 486 湖濱藍 437 叢林綠 842 淺橄欖 445 柳樹綠 446 橄欖綠



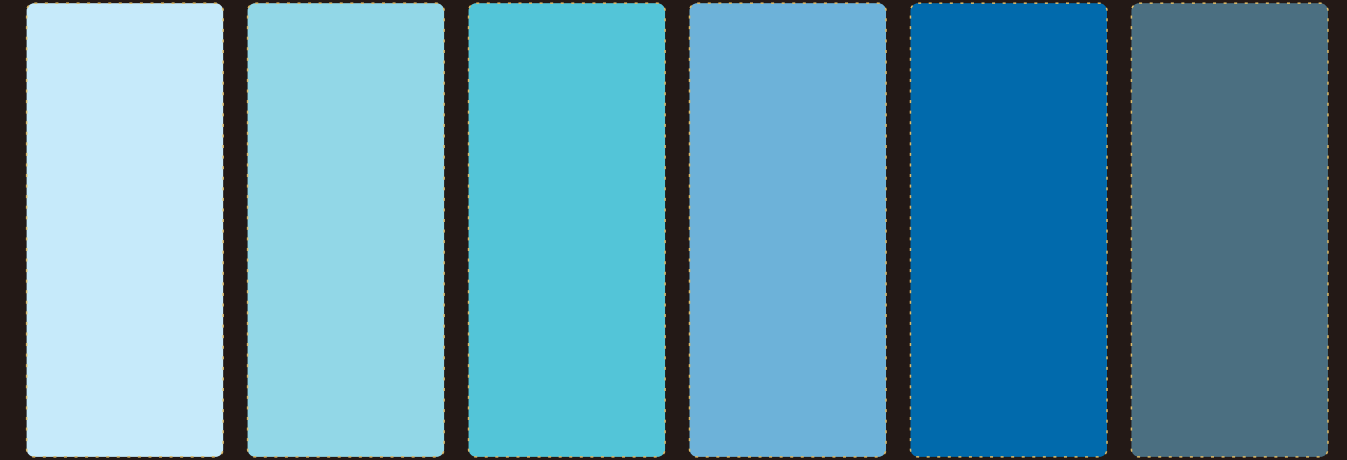
1941 達利灰 1947 灰豆綠 1942 青灰紫 1944 鯊皮藍 1834 深丹寧 1861 深幽藍

BLUE

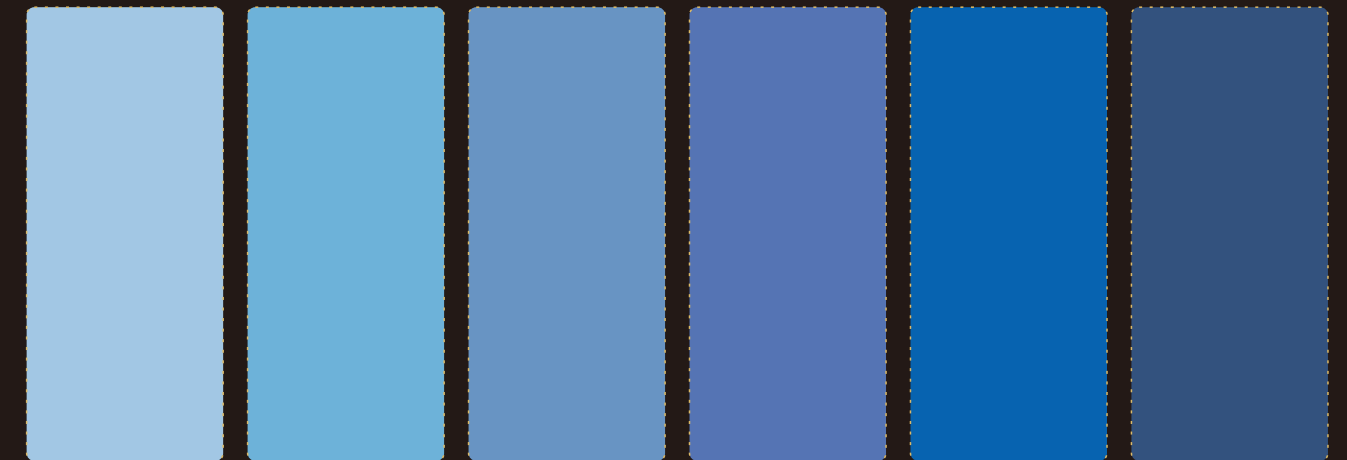
Finish : Sei

Size: 122x244cm 130x305cm

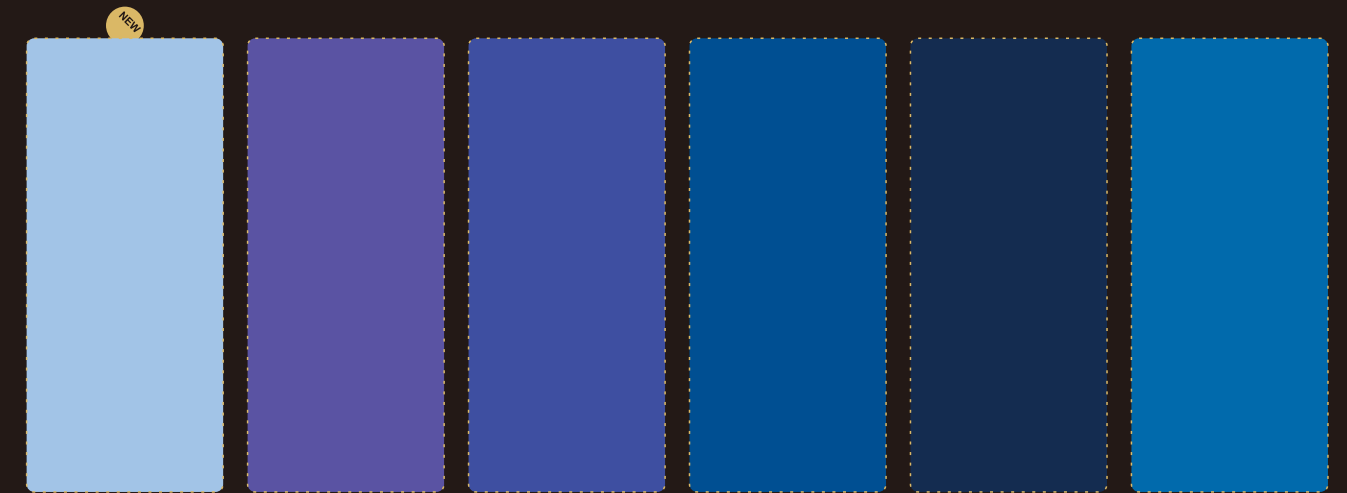
ABET LAMINATI 69/70



487 淺灰藍 857 天際藍 482 太空藍 499 加州藍 838 藏北藍 856 深海藍



858 深灰藍 847 高原藍 484 蔚藍色 430 品紫藍 851 海軍藍 849 孔雀藍



1860 天青藍 423 紫色 428 深紫藍 859 寶石藍 852 墨寶藍 1804 深寶藍



FLUO (VERTICAL USE ONLY)

Finish : Lucida
Size: 130x305cm

ABET LAMINATI 71/72



1433 Corallo Malindi



FLUO (VERTICAL USE ONLY)

Finish : Lucida

Size: 130x305cm



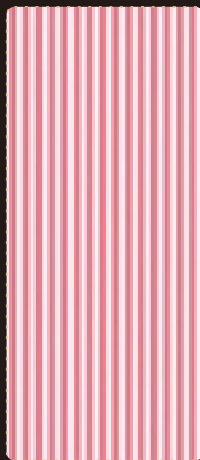
1430 America



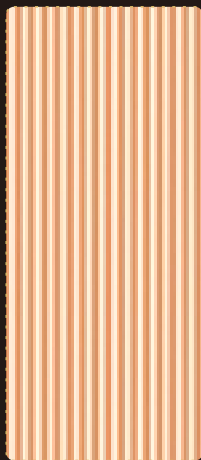
1432 Africa



1431 Europa



1447 Dallas



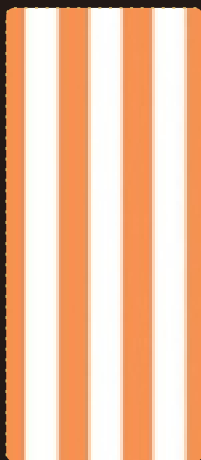
1441 Nairobi



1443 Dublino



1446 Texas



1440 Kenya



1442 Irlanda

